

WAAS CH <b>70441</b> <b>W11A</b>	APP CRS <b>115°</b>	Rwy Idg <b>4099</b> TDZE <b>790</b> Apt Elev <b>790</b>
--	------------------------	---

RNAV (GPS) RWY 11

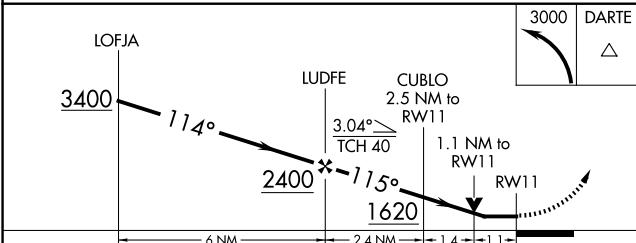
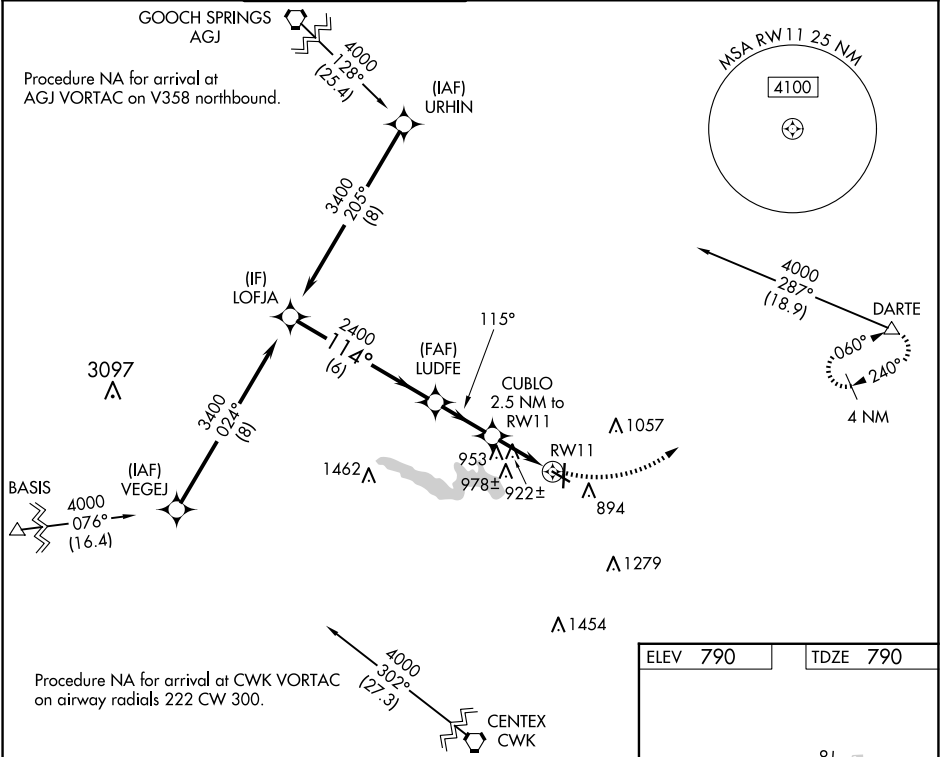
GEORGETOWN EXEC (GTU)

RNP APCH

▼ Rwy 11 helicopter visibility reduction below ¾ SM NA. When local altimeter setting not received, use Skylark Field altimeter setting and increase all MDA 80 feet. Increase LP and Circling Cat C/D visibility ¼ SM and LNAV Cat C/D visibility ⅓ SM. VDP NA when using Skylark Field altimeter setting.

MISSED APPROACH:  
Climbing left turn to  
3000 direct DARTE  
and hold.

ATIS <b>118.6</b>	AUSTIN APP CON <b>119.0 370.85</b>	GEORGETOWN TOWER ★ <b>120.225</b> (CTAF) <b>0</b>	GND CON <b>119.125</b>	CLNC DEL <b>119.125</b>	CLNC DEL <b>121.1</b> (when twr closed)	UNICOM <b>123.0</b>
----------------------	---------------------------------------	--	---------------------------	----------------------------	---	------------------------



CATEGORY	A	B	C	D
LP MDA	1180-1	390 (400-1)	1180-1½	390 (400-1½)
LNAV MDA	1220-1	430 (500-1)	1220-1¼	430 (500-1¼)
CIRCLING	1240-1 450 (500-1)	1340-1 550 (600-1)	1360-1½ 570 (600-1½)	1640-2¾ 850 (900-2¾)

