

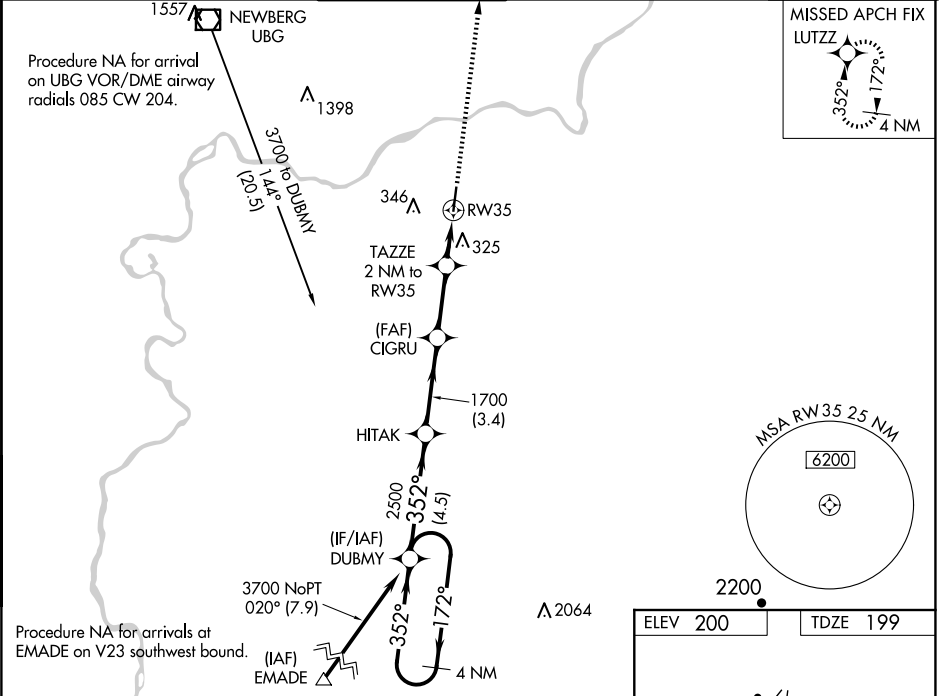
WAAS CH 7750B W35A	APP CRS 352°	Rwy Idg 5003 TDZE 199 Apt Elev 200
--	------------------------	---

RNAV (GPS) RWY 35

AURORA STATE (UAO)

RNP APCH.	MISSED APPROACH: Climb to 2500 direct LUTZZ and hold.
For uncompensated Baro-VNAV systems, LNAV/VNAV NA below -6°C or above 54°C. Rwy 35 helicopter visibility reduction below ¾ SM NA.	

ATIS 118.525	PORTLAND APP CON 126.0 269.175	AURORA TOWER★ 120.35 (CTAF)	GND CON 119.15	CLNC DEL 119.15	PORTLAND CLNC DEL 119.95 (When tower closed)
------------------------	--	---------------------------------------	--------------------------	---------------------------	---



4 NM Holding Pattern						VGS1 and RNAV glidepath not coincident (VGS1 Angle 3.25 /TCH 51).						2500	LUTZZ
DUBMY						HITAK		CIGRU		TAZZE 2 NM to RW35		*LNAV only	
3700 ←172° 352°→						352°		1700		*1 NM to RW35		RW35	
GP 3.00° TCH 40						2500		1700		*860			
						4.5 NM		3.4 NM		2.6 NM		1 NM	
CATEGORY						A		B		C		D	
LPV DA						453-7⁄8		254 (300-7⁄8)					
LNAV/VNAV DA						515-1		316 (400-1)					
LNAV MDA						620-1 421 (500-1)		620-1¼ 421 (500-1¼)					
C CIRCLING						700-1 500 (500-1)		700-1½ 500 (500-1½)		940-2¼ 740 (800-2¼)			

