

WAAS CH 50137 W25A	APP CRS 254°	Rwy Idg TDZE Apt Elev	6197 394 397
--	------------------------	-----------------------------	---

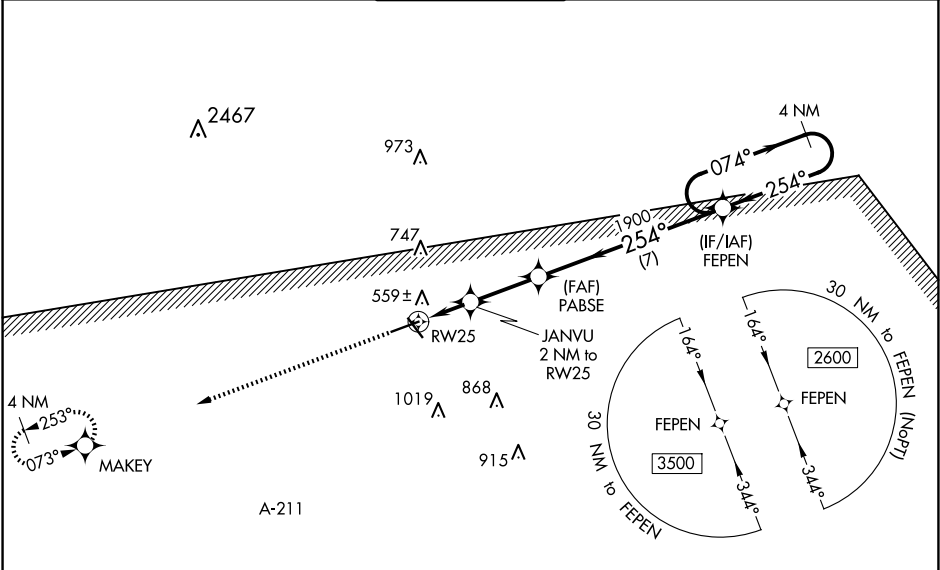
RNAV (GPS) RWY 25

TROY MUNI AT N KENNETH CAMPBELL FLD (TOI)

RNP APCH.		TROY TOWER ★ 124.3 (CTAF) 0 306.9		GND CON 121.9 294.7	UNICOM 122.8
ATIS 120.925		CAIRNS APP CON ★ 121.1 319.25			

For uncompensated Baro-VNAV systems, LNAV/VNAV NA below -7°C (20°F) or above 54°C (130°F). Baro-VNAV and VDP NA when using Montgomery Rgnl (Dannelly Fld) altimeter setting. Rwy 25 helicopter visibility reduction below ¾ SM NA. Circling to Rwy 14, 32 NA at night. When local altimeter setting not received, use Montgomery Rgnl (Dannelly Fld) altimeter setting and increase LPV DA to 747 and all visibilities ¼ SM, LNAV/VNAV DA to 840 and visibilities ⅓ SM, and all MDA 100 feet; increase LNAV Cals C and D and Circling Cat C visibility ¼ SM.

MISSED APPROACH:
Climb to 2200 direct
MAKEY and hold.



ELEV 397		TDZE 394	
2200 ↑ MAKEY			
*LNAV only.			
JANVU 2 NM to RW25		PABSE 1900	
RW25		FEPEN 4 NM Holding Pattern	
*1.2 NM to RW25		254°	
*1060		2600	
1.2 NM 0.8 NM 2.6 NM 7 NM		GP 3.00° TCH 45	
CATEGORY	A	B	D
LPV DA	647-7/8	253 (300-7/8)	
LNAV/VNAV DA	740-1 1/8	346 (400-1 1/8)	
LNAV MDA	820-1 426 (500-1)	820-1 1/4 426 (500-1 1/4)	
CIRCLING	1000-1 603 (700-1)	1300-2 3/4 903 (1000-2 3/4)	1380-3 983 (1000-3)

MIRL Rwy 7-25 and 14-32

RNAV (GPS) RWY 25

SE-4, 07 AUG 2025 to 04 SEP 2025

SE-4, 07 AUG 2025 to 04 SEP 2025