

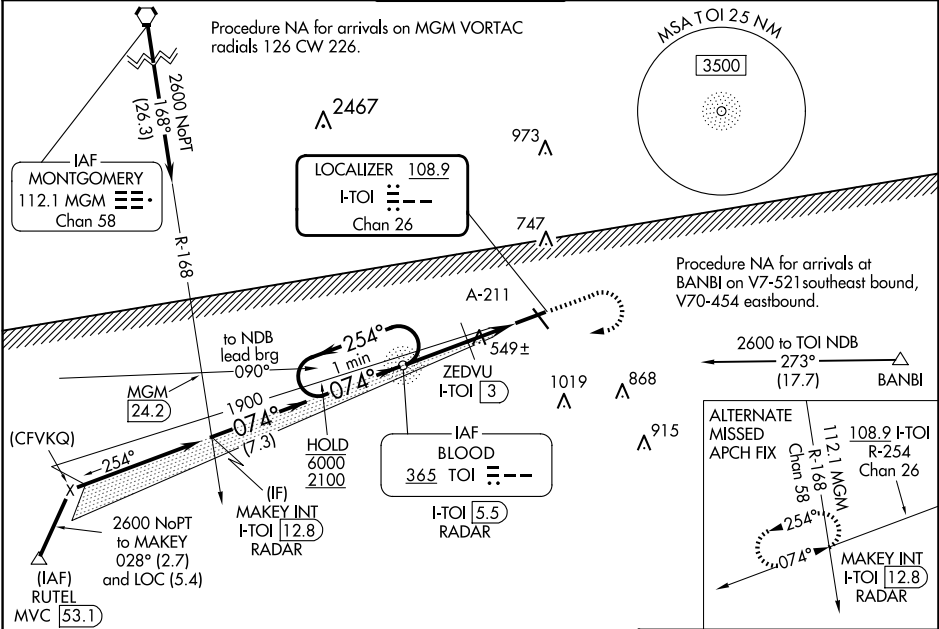
LOC/DME I-TOI	APP CRS	Rwy Idg	6197
108.9	074°	TDZE	389
Chan 26		Apt Elev	397

ILS or LOC RWY 7

TROY MUNI AT N KENNETH CAMPBELL FLD (TOI)

ADF required.	MISSED APPROACH: Climb to 1300 then climbing right turn to 2600 direct TOI NDB/I-TOI 5.5 DME/RADAR and hold.
Circling Rwy 14, 32 NA at night.	

ATIS	CAIRNS APP CON ★	TROY TOWER ★	GND CON	UNICOM
120.925	121.1 319.25	124.3 (CTAF) 306.9	121.9 294.7	122.8



One Minute Holding Pattern		TOI NDB I-TOI 5.5 RADAR	1300	2600	TOI
6000 ← 254°		1831			
2100 ← 074°					
1900		ZEDVU I-TOI 3			
1000		I-TOI 2.3			
GS 3.00°		I-TOI 1.1			
TCH 44					
		2.5 NM	0.7 NM	1.2 NM	
CATEGORY	A	B	C	D	
S-ILS 7		635-7/8	246 (300-3/4)		
S-LOC 7	1000-1	611 (700-1)	1000-1 3/4	611 (700-1 3/4)	
CIRCLING	1000-1	603 (700-1)	1300-2 3/4	1380-3	
			903 (1000-2 3/4)	983 (1000-3)	
ZEDVU FIX MINIMUMS (DME REQUIRED)					
S-LOC 7	800-1	411 (500-1)	800-1 1/8	411 (500-1 1/8)	
CIRCLING	1000-1	603 (700-1)	1300-2 3/4	1380-3	
			903 (1000-2 3/4)	983 (1000-3)	
MIRL Rwy 7-25 and 14-32					
FAF to MAP 4.4 NM					
Knots	60	90	120	150	180
Min:Sec	4:24	2:56	2:12	1:46	1:28

ILS or LOC RWY 7

SE-4, 07 AUG 2025 to 04 SEP 2025

SE-4, 07 AUG 2025 to 04 SEP 2025