

WAAS CH 82411 W06A	APP CRS 061°	Rwy Idg TDZE Apt Elev 5500 2065 2087
----------------------------------------	------------------------	--------------------------------------------------------------------------

RNAV (GPS) RWY 6

VIRGINIA HIGHLANDS (VJI)

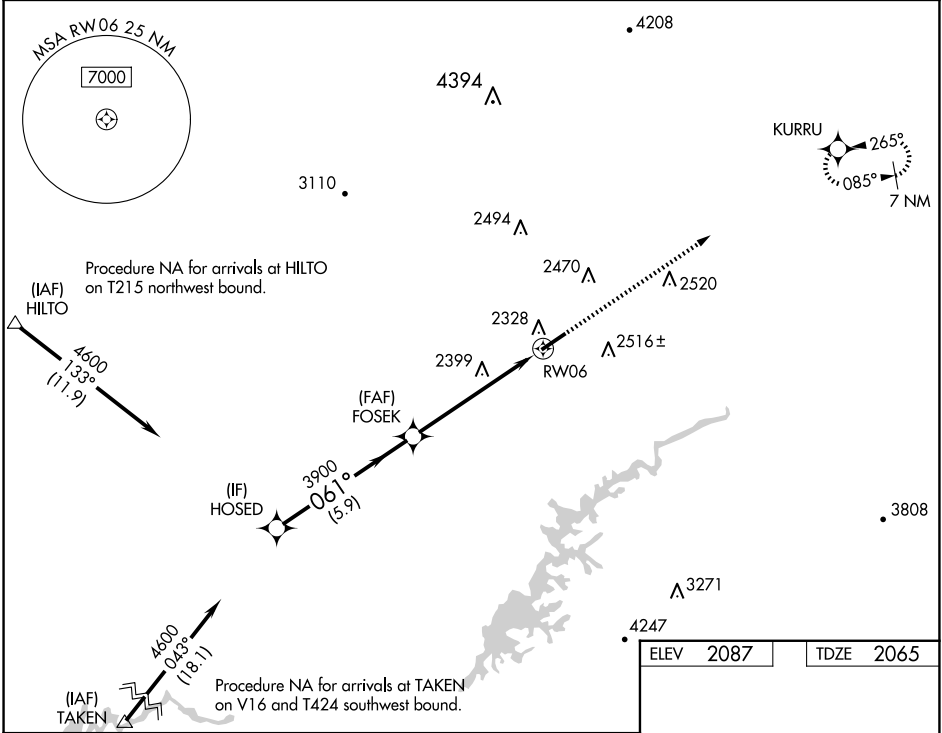
RNP APCH - GPS.

T

Rwy 6 helicopter visibility reduction below ¾ SM NA. For uncompensated Baro-VNAV systems, LNAV/VNAV NA below -19°C or above 54°C.

MISSED APPROACH: Climb to 7300 direct KURRU and hold, continue climb-in-hold to 7300.

AWOS-3 128.125	TRI CITY APP CON ★ 125.25 349.0	UNICOM 122.8 (CTAF) 0
--------------------------	-------------------------------------------	---------------------------------



HOSED

FOSEK

7300 KURRU

4600

3900

1.7 NM to RW06

GP 3.00°

TCH 45

5.9 NM

3.9 NM

1.7 NM

CATEGORY	A	B	C	D
LPV DA	2456-1⅞ 391 (400-1⅞)			
LNAV/VNAV DA	2528-1⅜ 463 (500-1⅜)			
LNAV MDA	2660-1 595 (600-1)		2660-1¾ 595 (600-1¾)	
CIRCLING	2860-1 773 (800-1)		2860-2¼ 3080-3 773 (800-2¼) 993 (1000-3)	

MIRL Rwy 6-24 0

REIL Rwy 6 and 24 0