

WAAS CH 77827 W24A	APP CRS 241°	Rwy Idg TDZE Apt Elev	5500 2087 2087
--	------------------------	-----------------------------	---

RNAV (GPS) RWY 24

VIRGINIA HIGHLANDS (VJI)

RNP APCH - GPS

▼

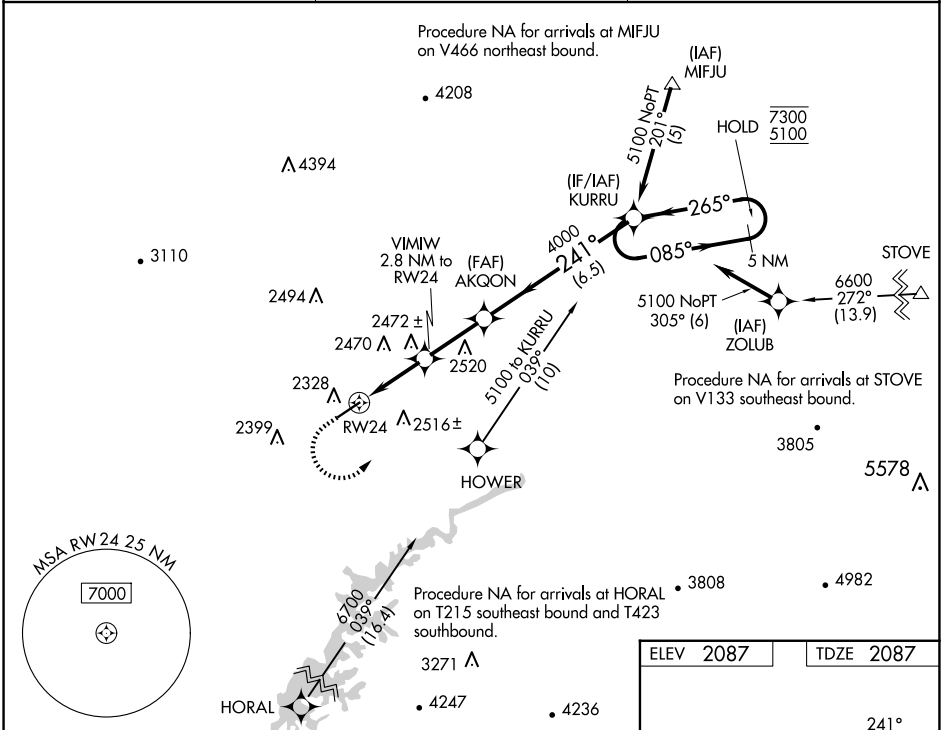
▲

For uncompensated Baro-VNAV systems, LNAV/VNAV NA below -19°C or above 54°C. Rwy 24 helicopter visibility reduction below ¾ SM NA. Inop table does not apply to LPV. For inop ALS, increase LNAV/VNAV Cat A/B visibility to 1¼ SM.

ODALS

MISSED APPROACH: Climb to 2900 then climbing left turn to 7300 direct KURRU and hold, continue climb-in-hold.

AWOS-3 128.125	TRI CITY APP CON ★ 125.25 349.0	UNICOM 122.8 (CTAF) 0
--------------------------	---	---------------------------------



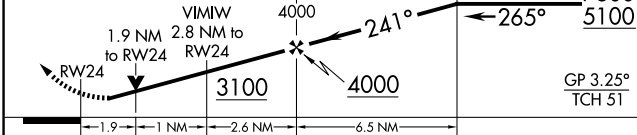
2900

7300

KURRU

VGSI and RNAV glidepath not coincident (VGSI Angle 3.25/TCH 23).

5 NM Holding Pattern



CATEGORY	A	B	C	D
LPV DA		2451-1	364 (400-1)	
LNAV/VNAV DA		2682-1½	595 (600-1½)	
LNAV MDA	2760-¾	673 (700-¾)	2760-1¾	673 (700-1¾)
CIRCLING	2860-1	773 (800-1)	2860-2¼ 773 (800-2¼)	3080-3 993 (1000-3)

ELEV 2087

TDZE 2087

MIRL Rwy 6-24 0

REIL Rwy 6 and 24 0