

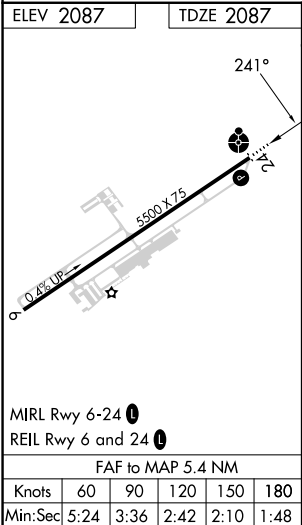
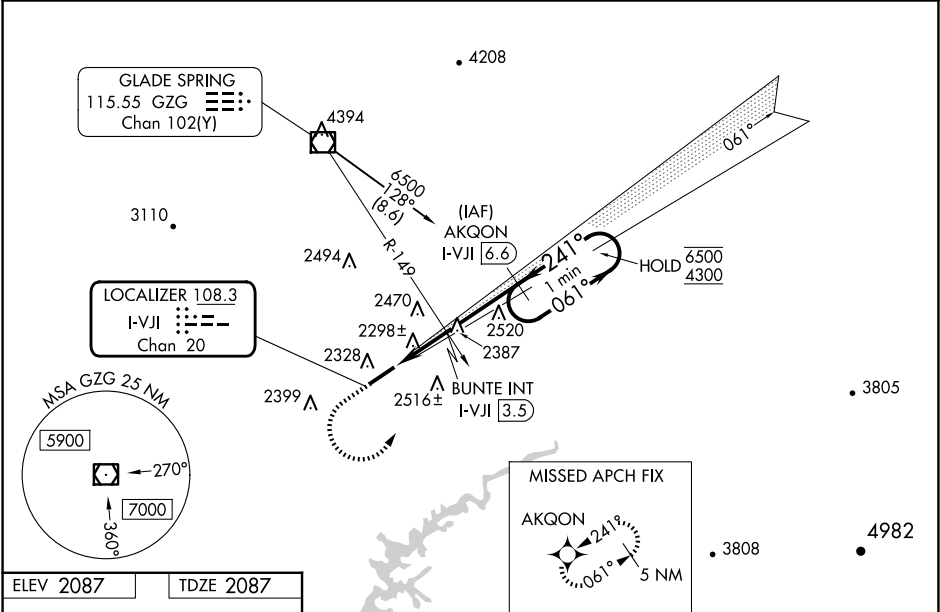
LOC/DME I-VJI	APP CRS	Rwy Idg	5500
108.3	241°	TDZE	2087
Chan 20		Apt Elev	2087

LOC RWY 24

VIRGINIA HIGHLANDS (VJI)

RNP APCH - GPS.	ODALS	MISSED APPROACH: (Do not exceed 210K until AKQON) Climb to 3900 then climbing left turn to 4800 direct AKQON and hold.
DME or RADAR required.		
▼ ▲ Rwy 24 helicopter visibility reduction below ¾ SM NA. VDP NA when using TRI altimeter setting. Inop table does not apply to S-LOC 24 Cat C and D. For inop ALS, increase BUNTE fix minimums S-LOC 24 Cat C and D visibility to 1½ SM.		

AWOS-3 128.125	TRI CITY APP CON ★ 125.25 349.0	UNICOM 122.8(CTAF) 0
-------------------	------------------------------------	-------------------------



3900		4800	AKQON	*3060 when using TRI altimeter setting.	
↑		↻	✧	AKQON I-VJI 6.6	
				One Minute Holding Pattern	
				061° → 6500	
				← 241° 4300	
				VGSi and descent angles not coincident (VGSi Angle 3.25/TCH 23).	
				BUNTE INT I-VJI 3.5	
				*2940	
				I-VJI 2.7	
				≤3.25° TCH 51	
				1.5 NM 0.8 NM 3.1 NM	
CATEGORY	A	B	C	D	
S-LOC 24*	2940-¾ 853 (900-¾)	2940-1 853 (900-1)	2940-2½	853 (900-2½)	
CIRCLING	2940-1¼	853 (900-1¼)	2940-2½ 853 (900-2½)	3080-3 993 (1000-3)	
BUNTE FIX MINIMUMS					
S-LOC 24	2640-¾	553 (600-¾)	2640-1¾	553 (600-1¾)	
CIRCLING	2860-1	773 (800-1)	2860-2¼ 773 (800-2¼)	3080-3 993 (1000-3)	