

WAAS CH <b>70604</b> <b>W07A</b>	APP CRS <b>069°</b>	Rwy Ldg TDZE Apt Elev	<b>5101</b> <b>1318</b> <b>1318</b>
--	------------------------	-----------------------------	---

RNAV (GPS) RWY 7

MERRILL MUNI (RRL)

RNP APCH - GPS.

▼

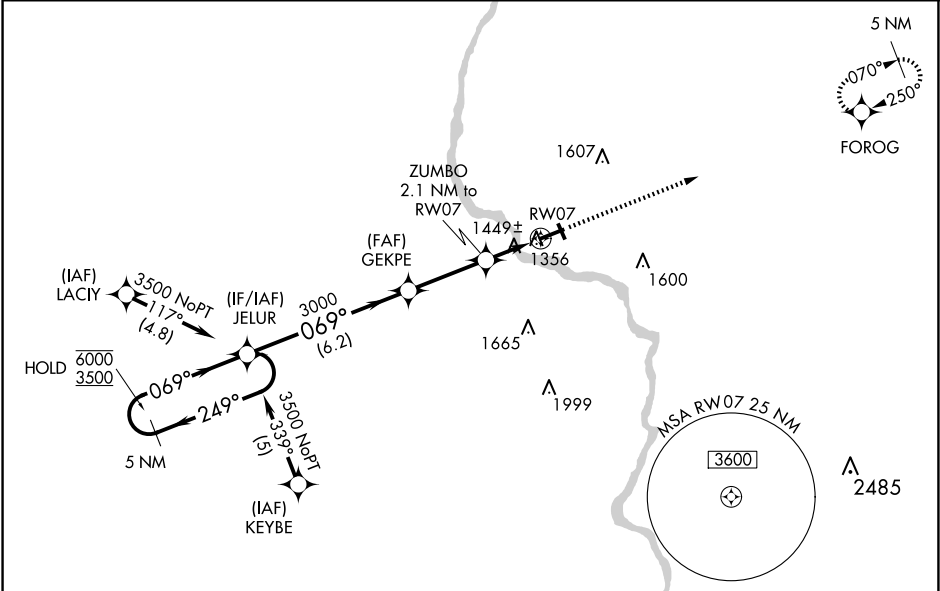
⚠

Circling Rwy 16, 34 NA at night. Rwy 7 helicopter visibility reduction below ¾ SM NA.

For uncompensated Baro-VNAV systems, LNAV/VNAV NA below -17°C or above 54°C.

MISSED APPROACH:  
Climb to 3500 direct  
FOROG and hold.

AWOS-3 <b>119.925</b>	MINNEAPOLIS CENTER <b>124.4 317.7</b>	UNICOM <b>122.8 (CTAF)</b> <b>0</b>
--------------------------	--	--



ELEV 1318

TDZE 1318

5 NM Holding Pattern

VGSI and RNAV glidepath not coincident (VGSI Angle 3.00/TCH 40).

3500 FOROG

GP 3.00° TCH 40

6.2 NM 3 NM 1 NM 1.1 NM

CATEGORY	A	B	C	D
LPV DA	1635-1	317 (400-1)		NA
LNAV/VNAV DA	1754-1¼	436 (500-1¼)		NA
LNAV MDA	1700-1	382 (400-1)	1700-1⅛ 382 (400-1⅛)	NA
CIRCLING	1760-1 442 (500-1)	1780-1 462 (500-1)	1920-1¾ 602 (700-1¾)	NA

REIL Rwy 7 and 25 0

MIRL Rwy 16-34 and 7-25 0

EC-3, 07 AUG 2025 to 04 SEP 2025

EC-3, 07 AUG 2025 to 04 SEP 2025