

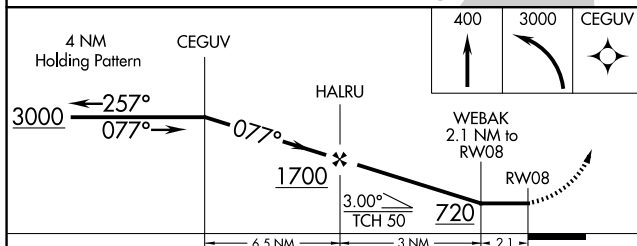
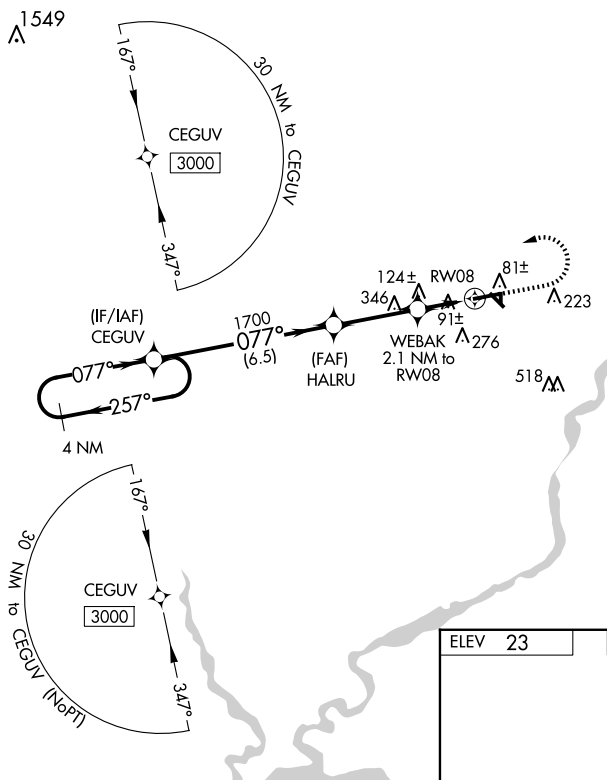
WAAS CH <b>90436</b> <b>W08A</b>	APP CRS <b>077°</b>	Rwy Idg <b>5002</b> TDZE <b>17</b> Apt Elev <b>23</b>
--	------------------------	---

RNAV (GPS) RWY 8  
JENNINGS (3R7)

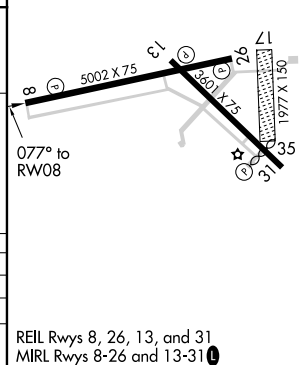
**T** DME/DME RNP-0.3 NA. Night landing: Rwy 08, 31 NA. Helicopter visibility reduction below 1 SM NA. When local altimeter setting not received, use Lake Charles Rgnl altimeter setting: Increase all MDA 80 ft, LP Cat C visibility  $\frac{1}{4}$  mile, LNAV Cat C visibility  $\frac{3}{8}$  mile, and Circling Cat C visibility  $\frac{1}{4}$  mile.

**MISSED APPROACH:** Climb to 400 then climbing left turn to 3000 direct CEGUV and hold.

AWOS-3PT <b>121.150</b>	LAKE CHARLES APP CON★ <b>119.8 282.3</b>	UNICOM <b>122.8 (CTAF) L</b>
----------------------------	---	---------------------------------



CATEGORY	A	B	C	D
LP MDA	360-1	343 (400-1)		NA
LNAV MDA	380-1	363 (400-1)		NA
<b>C</b> CIRCLING	580-1	557 (600-1)	680-1 <sup>3</sup> / <sub>4</sub> 657 (700-1 <sup>3</sup> / <sub>4</sub> )	NA



## RNAV (GPS) RWY 8