

JENNINGS, LOUISIANA

AL-5716 (FAA)

20198

WAAS CH <b>90236</b> <b>W26A</b>	APP CRS <b>257°</b>	Rwy Idg <b>5002</b> TDZE <b>20</b> Apt Elev <b>23</b>
--	------------------------	---

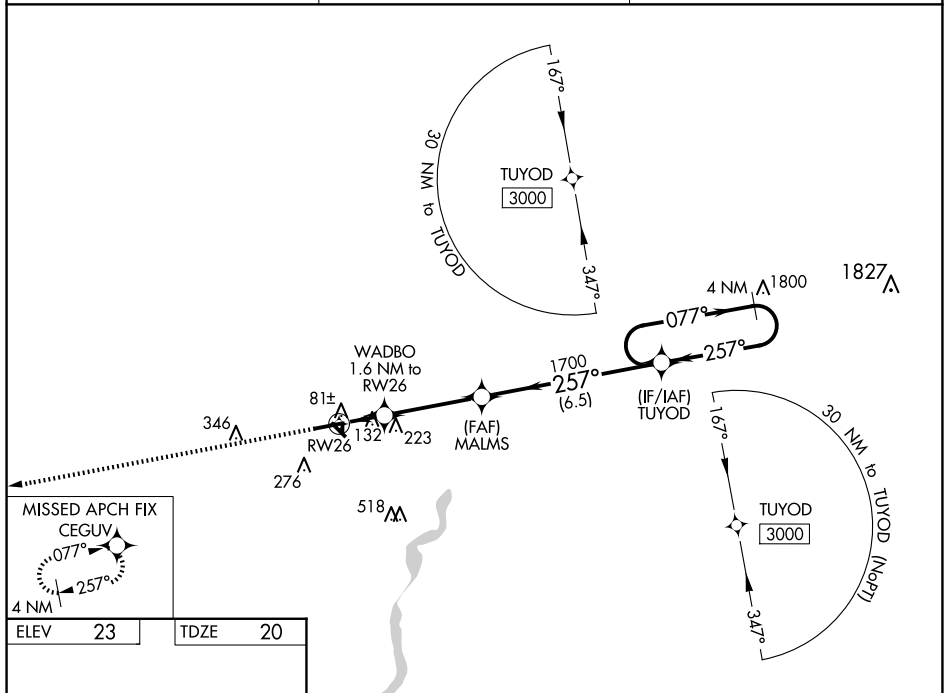
RNAV (GPS) RWY 26  
JENNINGS (3B.7)

JENNINGS (3R7)

- For uncompensated Baro-VNAV systems, LNAV/VNAV NA below -15°C (5°F) or above 54°C (130°F).
- DME/DME RNP-0.3 NA.** Baro-VNAV and VDP NA when using Lake Charles Rgnl altimeter setting.
- Night landing:** Rwy 8, 31 NA. Helicopter visibility reduction below  $\frac{3}{4}$  SM NA. When local altimeter setting not received, use Lake Charles Rgnl altimeter setting: Increase all DA 69 ft and all MDA 80 ft; increase LPV and LNAV/VNAV all Cots visibility  $\frac{1}{4}$  mile, increase LNAV/Circling Cat C visibility  $\frac{1}{4}$  mile.

**MISSED APPROACH:**  
Climb to 3000 direct  
CEGUV and hold.

AWOS-3PT <b>121.150</b>	LAKE CHARLES APP CON ★ <b>119.8 282.3</b>	UNICOM <b>122.8</b> (CTAF) <b>0</b>
----------------------------	--	--



ELEV	23	TDZE	20
------	----	------	----

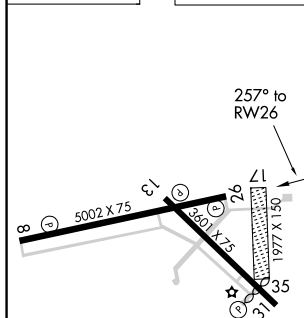


Diagram illustrating a 4 NM Holding Pattern for RW26. The pattern is defined by the following segments and turns:

- Initial turn: 1 NM to RW26
- First leg: 0.6 NM to RW26
- Second leg: 3.5 NM to RW26
- Third leg: 6.5 NM to RW26
- Heading: 077° (outbound) and 257° (inbound)
- Altitude: 1700 feet (MALMS and TUYOD)
- GP 3.00° TCH 50

REIL Rwy 8, 26, 13, and 31  
MIRI Rwy 8-26 and 13-31

JENNINGS, LOUISIANA  
Orig-A 23JUN16

30°15'N-92°40'W

JENNINGS (3R7)

## RNAV (GPS) RWY 26

SC-4, 07 AUG 2025 to 04 SEP 2025

SC-4, 07 AUG 2025 to 04 SEP 2025