

DENVER, COLORADO

AL-5715 (FAA)

25219

WAAS CH 40339 W35A	APP CRS 350°	Rwy Ldg TDZE Apt Elev	10001 5885 5885
--	------------------------	-----------------------------	--

RNAV (GPS) RWY 35R
CENTENNIAL (APA)

RNP APCH.

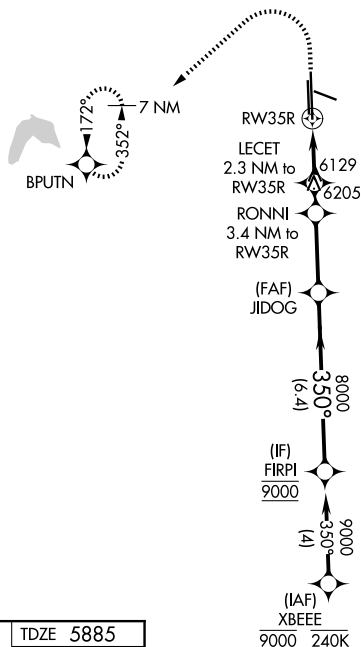
T Circling Rwy 35L NA at night. For uncompensated Baro-VNAV systems
A LNAV/VNAV NA below -21°C or above 54°C. For inop ALS, increase
LNAV Cats C/D visibility to 1 $\frac{3}{8}$ SM.

MALSR



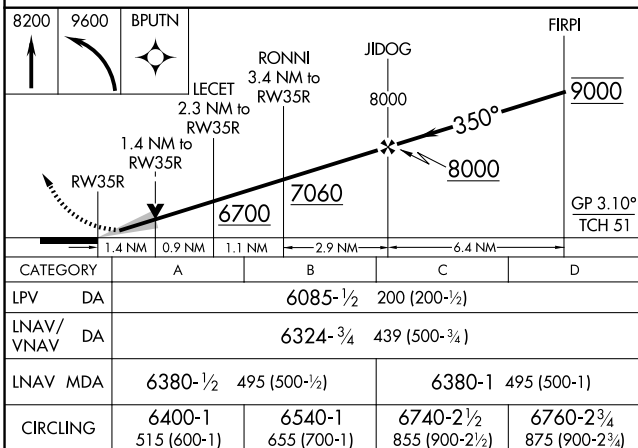
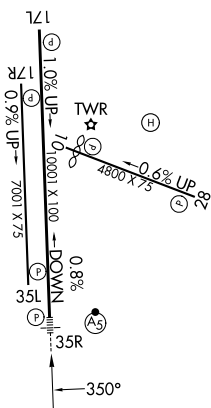
MISSED APPROACH: (Do not exceed 240K until BPUTN) Climb to 8200 then climbing left turn to 9600 direct BPUTN and hold.

<p>ATS</p> <p>120.3</p>	<p>DENVER APP CON</p> <p>132.75 269.3</p>	<p>CENTENNIAL TOWER</p> <p>118.9</p>	<p>GND CON</p> <p>121.8</p>	<p>CLNC DEL</p> <p>128.6</p>
--------------------------------	--	---	------------------------------------	-------------------------------------



ELEV 5885		TDZE 5885
-----------	--	-----------

MIRL all Rwy's
REIL Rwy's 17R, 28, and 35L



DENVER, COLORADO

Amdt 1B 23FEB23

CENTENNIAL (APA)

39°34'N-104°51'W

RNAV (GPS) RWY 35R

SW-1, 07 AUG 2025 to 04 SEP 2025

SW-1, 07 AUG 2025 to 04 SEP 2025