

WAAS
CH **82107**
W28A

APP CRS
283°

Rwy Ldg
TDZE
Apt Elev
4800
5813
5885

RNAV (GPS) RWY 28
CENTENNIAL (APA)

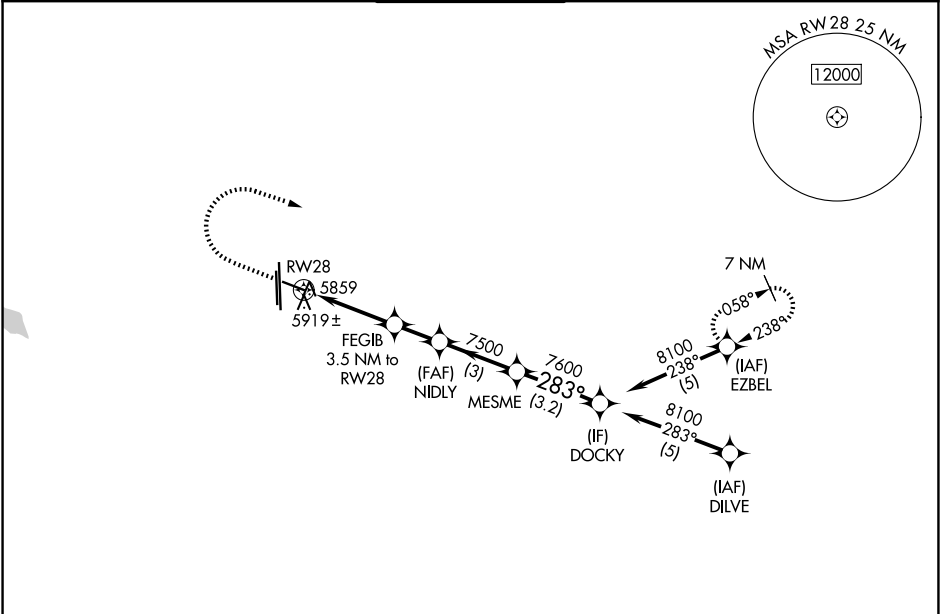
RNP APCH.

▼

For uncompensated Baro-VNAV systems, LNAV/VNAV NA below -26°C or above 49°C. Rwy 28 helicopter visibility reduction below ¾ SM NA. Circling Rwy 35L NA at night.

MISSED APPROACH: Climb to 6400 then climbing right turn to 9000 direct EZBEL and hold.

ATIS 120.3	DENVER APP CON 132.75 269.3	CENTENNIAL TOWER 118.9	GND CON 121.8	CLNC DEL 128.6
----------------------	---------------------------------------	----------------------------------	-------------------------	--------------------------



ELEV **5885**

TDZE **5813**

6400

9000

EZBEL

*LNAV only.

RWY 28

FEGIB
3.5 NM to RWY 28

NIDLY
7500

MESME
7600

DOCKY
8100

1.3

2.2 NM

1.7 NM

3 NM

3.2 NM

6940*

7500

283°

GP 3.00°
TCH 41

CATEGORY	A	B	C	D
LPV DA	6079-7/8 266 (200-7/8)			
LNAV/VNAV DA	6119-1 306 (300-1)			
LNAV MDA	6260-1 447 (400-1)	6260-13/8 447 (400-13/8)		
CIRCLING	6400-1 515 (600-1)	6540-1 655 (700-1)	6740-21/2 855 (900-21/2)	6900-3 1015 (1100-3)

MIRL all Rwys
REIL Rwys 17R, 28, and 35L

17L
1.0% UP
0.7% UP
7001 X 7.5

TWR
4800 X 7.5

35L
0.8% DOWN
35R