

SW-1, 07 AUG 2025 to 04 SEP 2025

**TOP ALTITUDE:**  
**FL230**

NOTE: DME/DME/IRU or GPS required.

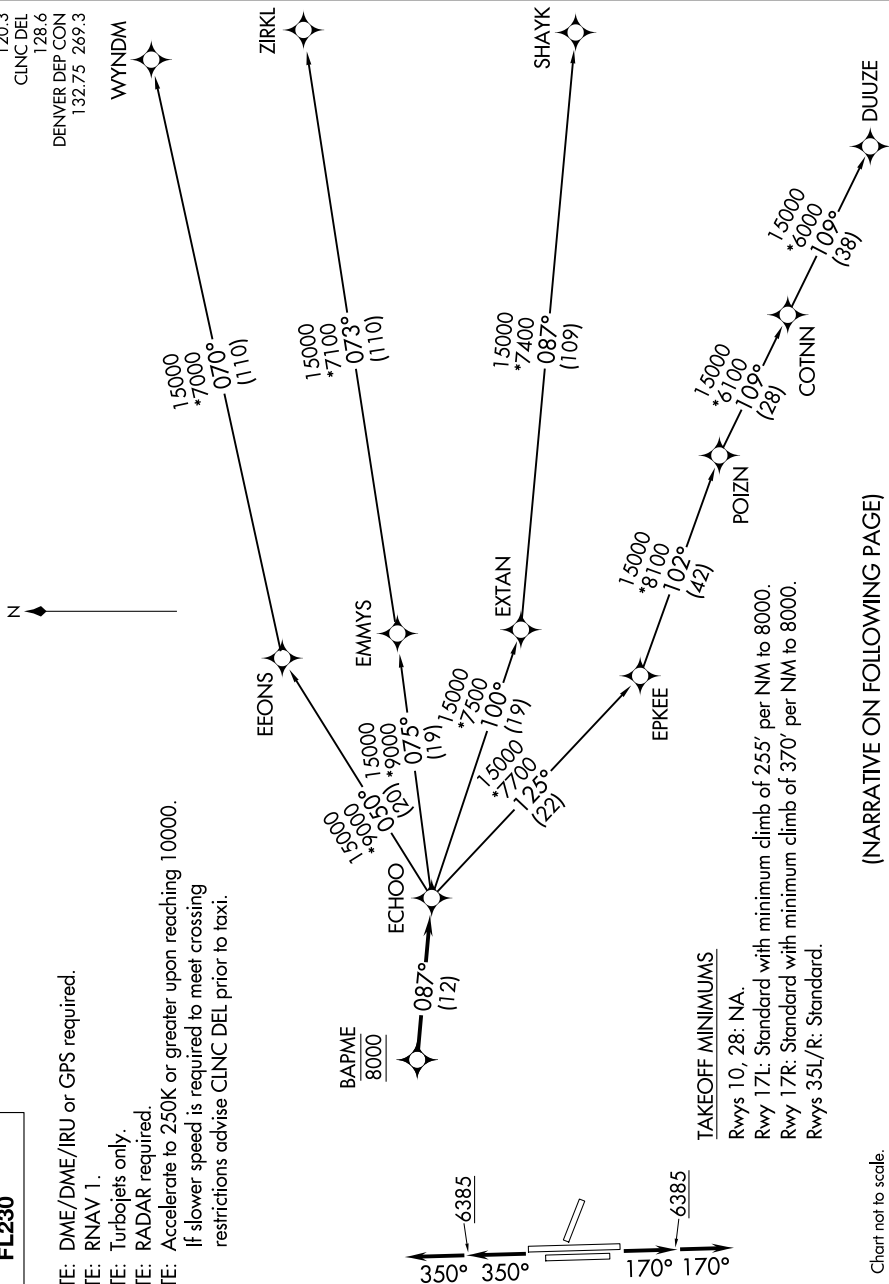
NOTE: RNAV 1.

NOTE: Turbojets only.

NOTE: RADAR required.

NOTE: Accelerate to 250K or greater upon reaching 10000.

If slower speed is required to meet crossing restrictions advise CLNC DEL prior to taxi.



NOTE: Chart not to scale.

(NARRATIVE ON FOLLOWING PAGE)

SW-1, 07 AUG 2025 to 04 SEP 2025