

APP CRS

Rwy Idg

3601

029°

TDZE

65

Apt Elev

65

RNAV (GPS) RWY 3

HAMMONTON MUNI (N81)

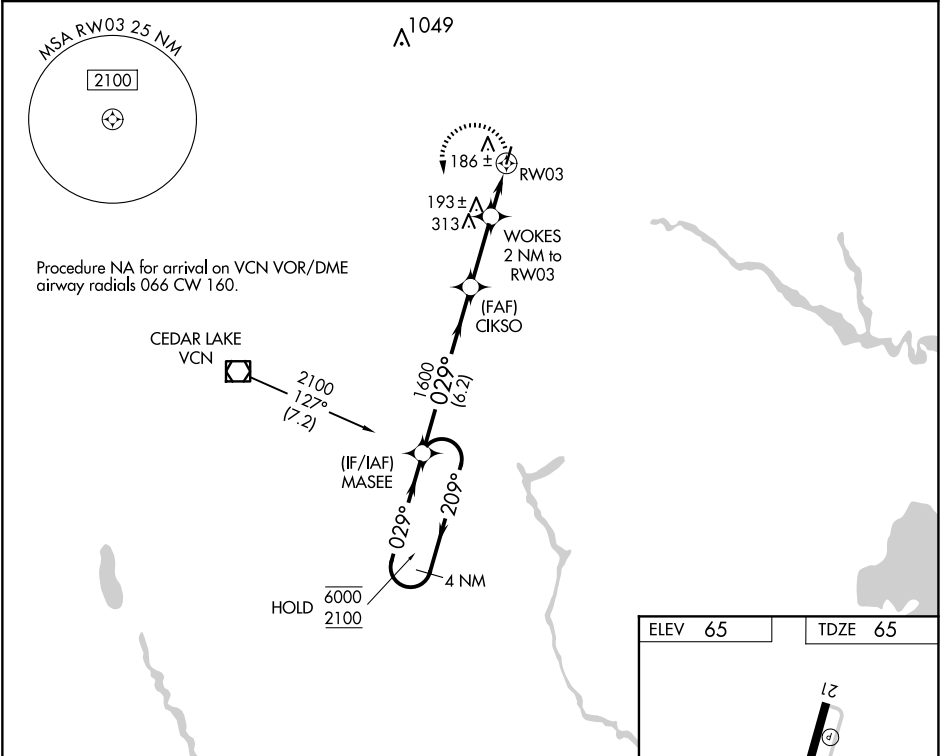
RNP APCH - GPS.

NA

Procedure NA at night. Rwy 3 helicopter visibility reduction below 1 SM NA. When local altimeter setting not received, use Atlantic City altimeter setting and increase all MDA 40 feet. Increase LNAV CAT C visibility 1/8 SM.

MISSED APPROACH: Climbing left turn to 2100 direct MASEE and hold.

AWOS-AV 122.7	ACY ASOS 125.725 316.15	ATLANTIC CITY APP CON 134.25 292.2	GCO 121.725	UNICOM 122.7 (CTAF)	123.5
------------------	----------------------------	---------------------------------------	----------------	------------------------	-------



4 NM Holding Pattern

VGSI and descent angles not coincident (VGSI Angle 3.50/TCH 25).

2100

MASEE

6000

2100

209°

029°

029°

CIKSO

WOKES 2 NM to RW03

3.04° TCH 40

1600

740

RW03

6.2 NM

2.6 NM

2 NM

CATEGORY	A	B	C	D
LNAV MDA	560-1	495 (500-1)	560-1 3/8 495 (500-1 3/8)	NA
CIRCLING	560-1	495 (500-1)	680-1 3/4 615 (700-1 3/4)	NA

ELEV 65

TDZE 65

12

3

3601 X 75

029°

MIRL Rwy 3-21

REIL Rwy 3 and 21