

WAAS CH <b>99318</b> <b>W23A</b>	APP CRS <b>229°</b>	Rwy Idg <b>4508</b> TDZE <b>195</b> Apt Elev <b>195</b>
--	------------------------	---

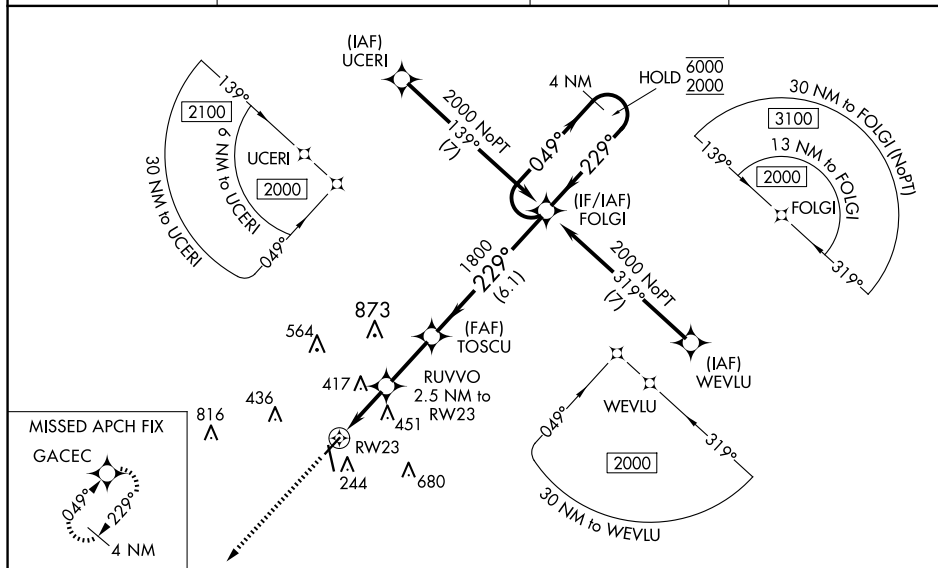
RNAV (GPS) RWY 23  
ORANGEBURG MUNI (OGB)

RNP APCH-GPS.

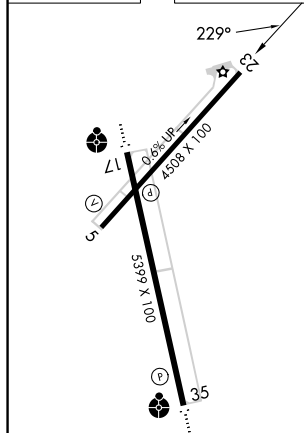
**T** Circling Rwy 17 NA at night. Baro-VNAV and VDP NA when using Columbia Metro altimeter setting. For uncompensated Baro-VNAV systems, LNAV/VNAV NA below -4°C or above 54°C. When local altimeter setting not received, use Columbia Metro altimeter setting: increase LPV DA to 538 feet and all visibilities  $\frac{1}{8}$  SM; increase LNAV/VNAV DA to 740 feet and all visibilities  $\frac{1}{4}$  SM; increase all MDAs 80 feet and visibility Cats C and D  $\frac{1}{4}$  SM.

**MISSED APPROACH:** Climb to 2000 direct GACEC and hold.

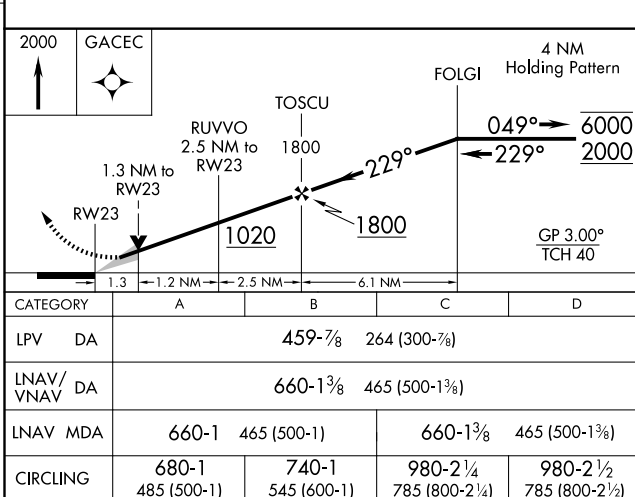
ASOS 118.525	COLUMBIA APP CON 124.15 338.2	GCO 125.675	UNICOM 122.7 (CTAF) 0
-----------------	----------------------------------	----------------	--------------------------



ELEV 195	TDZE 195
----------	----------

REFL RWYS 17, 23, and 35 **L**

MIRI Buses 5-23 and 17-35 1



ORANGEBURG, SOUTH CAROLINA

Amdt 2 15JUN23

33°27'N-80°52'W

ORANGEBURG MUNI (OGB)

RNAV (GPS) RWY 23

SE-2, 07 AUG 2025 to 04 SEP 2025