

APP CRS
174°

Rwy Idg
5399

TDZE
181

Apt Elev
195

RNAV (GPS) RWY 17

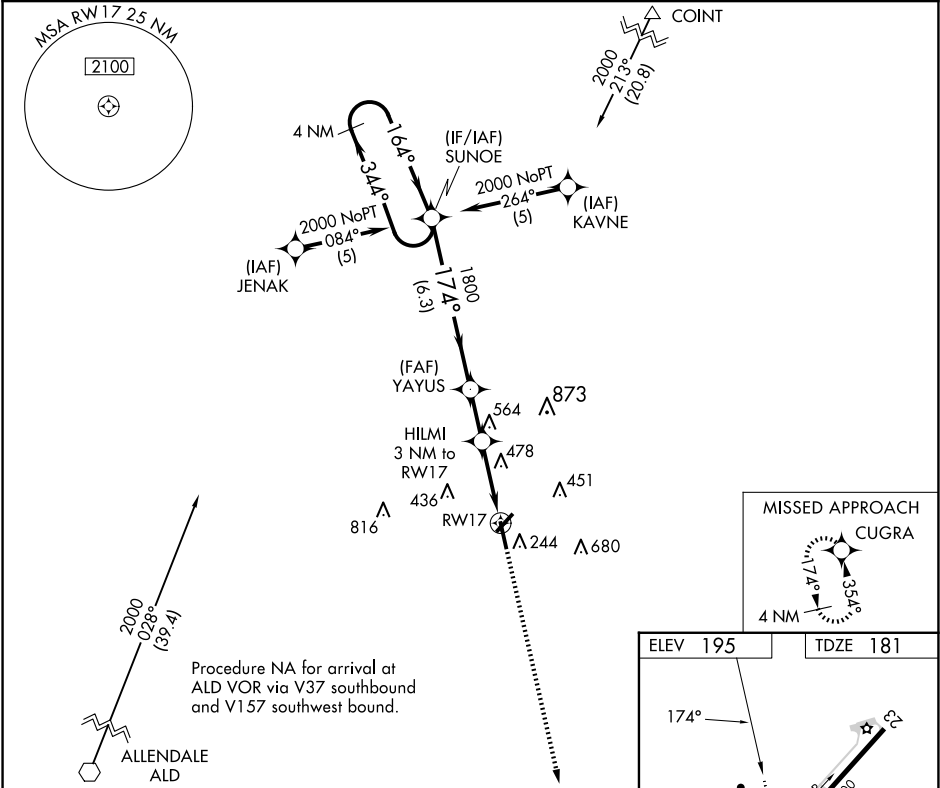
ORANGEBURG MUNI (OGB)

RNP APCH-GPS.

When local altimeter setting not received, use Columbia Metro altimeter setting and increase all MDAs 80 feet and visibility Cat C/D ½ SM, and Circling visibility Cat C/D ¼ SM. VDP NA when using Columbia Metro altimeter setting. Straight-in minimums NA at night, Circling Rwy 17 NA at night. Rwy 17 helicopter visibility reduction below 1 SM NA.

ODALS
MISSED APPROACH: Climb to 2000 direct CUGRA and hold.

| | | | |
|------------------------|---|-----------------------|---------------------------------|
| ASOS 118.525 | COLUMBIA APP CON 124.15 338.2 | GCO 125.675 | UNICOM 122.7 (CTAF) 0 |
|------------------------|---|-----------------------|---------------------------------|



4 NM Holding Pattern

SUNOE

YAYUS

HILMI 3 NM to RW17

2000

CUGRA

2000

344°

164°

174°

1800

3.04°

1180

TCH 42

6.3 NM

1.9 NM

1.2 NM

1.8

RW17

| CATEGORY | A | B | C | D |
|----------|-------------------|---------------------|----------------------|----------------------|
| RNAV MDA | 780-¾ 599 (600-¾) | 780-1½ 599 (600-1½) | 780-1½ 599 (600-1½) | 780-1½ 599 (600-1½) |
| CIRCLING | 780-1 585 (600-1) | 800-1 605 (700-1) | 1040-2½ 845 (900-2½) | 1040-2¾ 845 (900-2¾) |

REIL Rwys 17, 23, and 35

MRL Rwys 5-23 and 17-35