

WAAS CH 45708 W03A	APP CRS 035°	Rwy Idg 5000 TDZE 812 Apt Elev 819
--	------------------------	---

RNAV (GPS) Z RWY 3

MADISON MUNI (IMS)

⚠

⚠NA

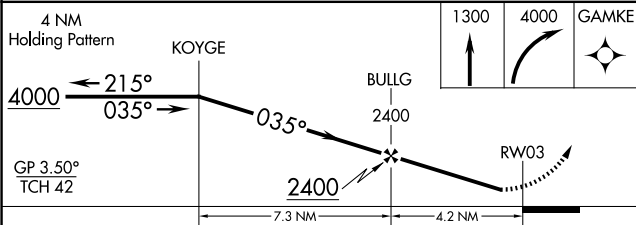
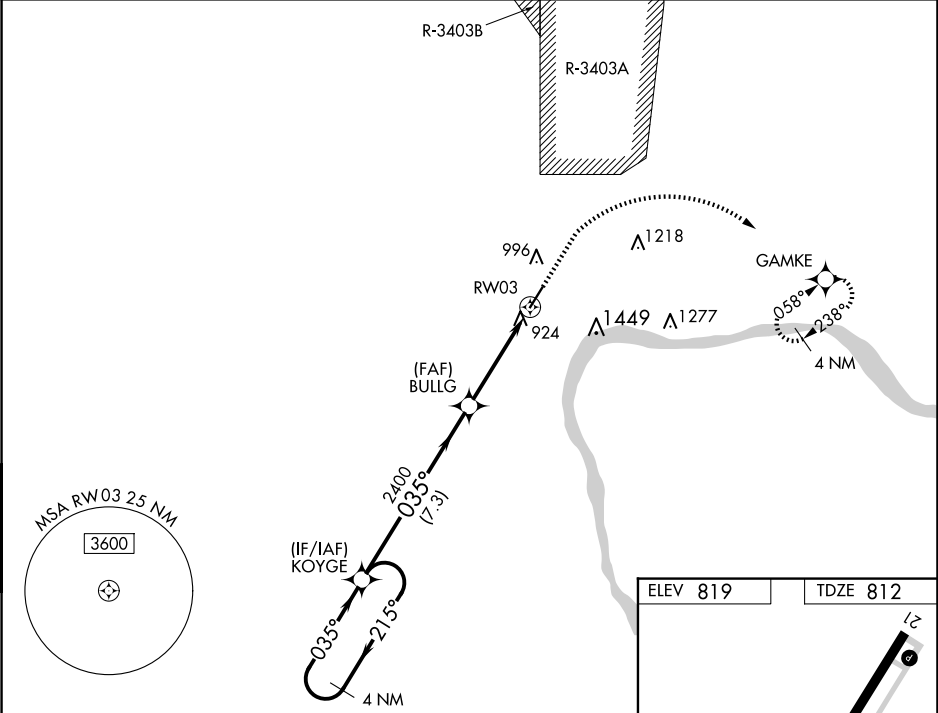
For uncompensated Baro-VNAV systems, LNAV/VNAV NA below -16°C (4°F) or above 54°C (130°F). DME/DME RNP-0.3 NA. Rwy 3 helicopter visibility reduction below ¾ SM NA. For inoperative ALS, increase **LNAV/VNAV all Cats visibility to ¾ SM. For inoperative ALS when using Bowman Field altimeter setting, increase LPV all Cats visibility to 1¾ SM; increase **LNAV/VNAV all Cats visibility to ¾ SM and LNAV/VNAV all Cats visibility to 2½ SM.

MALSF

MISSED APPROACH:

Climb to 1300 then climbing right turn to 4000 direct GAMKE and hold, continue climb-in-hold to 4000. **Missed approach requires minimum climb of 410 feet per NM to 1900.

AWOS-3 119.175	LOUISVILLE APP CON 132.075 327.0	UNICOM 123.0 (CTAF) 0
--------------------------	--	---------------------------------



CATEGORY	A	B	C	D
LPV DA	1142-¾	330 (400-¾)		NA
LNAV/VNAV DA**	1095-¾	283 (300-¾)		NA
LNAV/VNAV DA	1420-1½	608 (700-1½)		NA

