

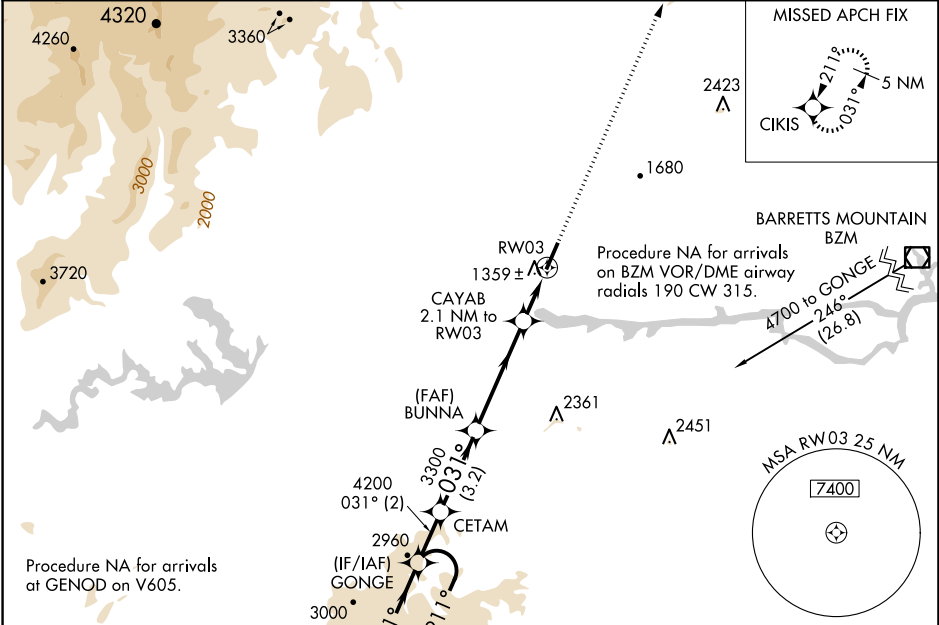
WAAS CH 69322 W03A	APP CRS 031°	Rwy Idg TDZE 1248 Apt Elev 1270
--	------------------------	---

RNAV (GPS) RWY 3
FOOTHILLS RGNL (MRN)

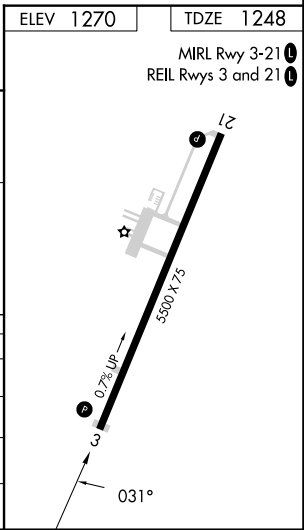
Baro-VNAV NA when using Hickory altimeter setting. For uncompensated Baro-VNAV systems, LNAV/VNAV NA below -17°C (2°F) or above 36°C (96°F). DME/DME RNP-0.3 NA. VDP NA with Hickory altimeter setting. When local altimeter not received use Hickory altimeter: increase LPV DA to 1540 feet, LNAV/VNAV DA to 1600 feet, and visibility LNAV/VNAV all Cats ¼ SM; increase all MDA 60 feet and visibility LNAV Cats C and D ¼ SM and Circling Cat D ¼ SM.

MISSED APPROACH:
Climb to 4800 direct
CIKIS and hold.

AWOS-3P 124.175	ATLANTA CENTER 125.15 263.0	UNICOM 122.7 (CTAF) 0
---------------------------	---------------------------------------	---------------------------------



(IAF) GENOD		4700 NoPT 073° (12.8)		5 NM Holding Pattern		VGSI and RNAV glidepath not coincident (VGSI Angle 3.00/TCH 66).		4800 CIKIS	
GONGE		CETAM		BUNNA		CAYAB		RWY 3	
4700		4200		3300		2.1 NM to RWY 3		*1 NM to RWY 3	
GP 3.00° TCH 45		031°		031°		*1940		RWY 3	
2 NM		3.2 NM		4.3 NM		1.1 NM		1 NM	
CATEGORY	A	B		C		D			
LPV DA	1498-1		250 (300-1)						
LNAV/VNAV DA	1558-1½		310 (300-1½)						
LNAV MDA	1620-1		372 (400-1)						
CIRCLING	1720-1 450 (500-1)	1760-1 490 (500-1)	1800-1½ 530 (600-1½)	2140-2¾ 870 (900-2¾)					



SE-2, 07 AUG 2025 to 04 SEP 2025

SE-2, 07 AUG 2025 to 04 SEP 2025