

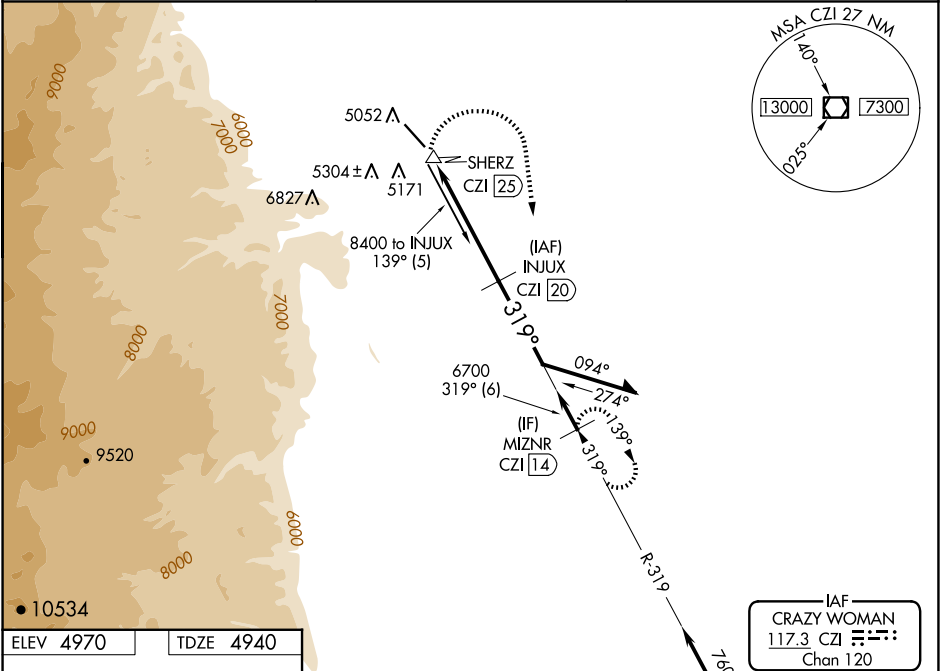
VOR/DME CZI	APP CRS	Rwy Ldg
117.3	319°	6143
Chan 120		TDZE 4940
		Apt Elev 4970

VOR/DME RWY 31
JOHNSON COUNTY (BYG)

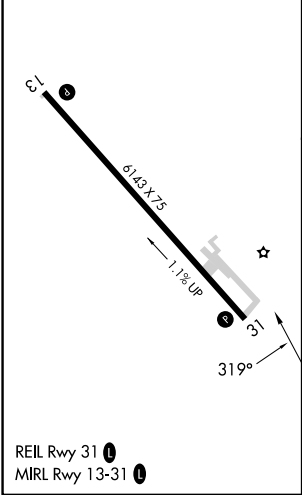
⚠ Visibility reduction by helicopters NA. If local altimeter setting not received, use Sheridan altimeter setting and increase all MDAs 600 feet. When VGSI inoperative, procedure NA at night. Circling NA southwest of Rwy 13-31.

MISSED APPROACH: Climbing right turn to 7600 via heading 160° and CZI VOR/DME R-319 to MIZNR/14 DME and hold.

ASOS 135.425	SALT LAKE CENTER 127.75 351.9	UNICOM 122.8 (CTAF) 0
-----------------	----------------------------------	---------------------------------



ELEV 4970	TDZE 4940
-----------	-----------



7600 hdg 160°	CZI R-319	MIZNR CZI 14	INJUX CZI 20	VGSI and descent angles not coincident (VGSI Angle 3.00/TCH 42).
			8100	Remain within 10 NM
		ZEDRI CZI 25.2	≤ 3.02° TCH 32	
			6700	
CATEGORY	A	B	C	D
S-31	5680-1 740 (800-1)	5680-1¼ 740 (800-1¼)	5680-2¼ 740 (800-2¼)	5680-2½ 740 (800-2½)
C CIRCLING	5680-1 710 (800-1)	5680-1¼ 710 (800-1¼)	5680-2¼ 710 (800-2¼)	5680-2½ 710 (800-2½)

NW-1, 07 AUG 2025 to 04 SEP 2025

NW-1, 07 AUG 2025 to 04 SEP 2025