

WAAS CH 48835 W31A	APP CRS 306°	Rwy Ldg TDZE Apt Elev	6143 4940 4970
--	------------------------	-----------------------------	---

RNAV (GPS) RWY 31

JOHNSON COUNTY (BYG)

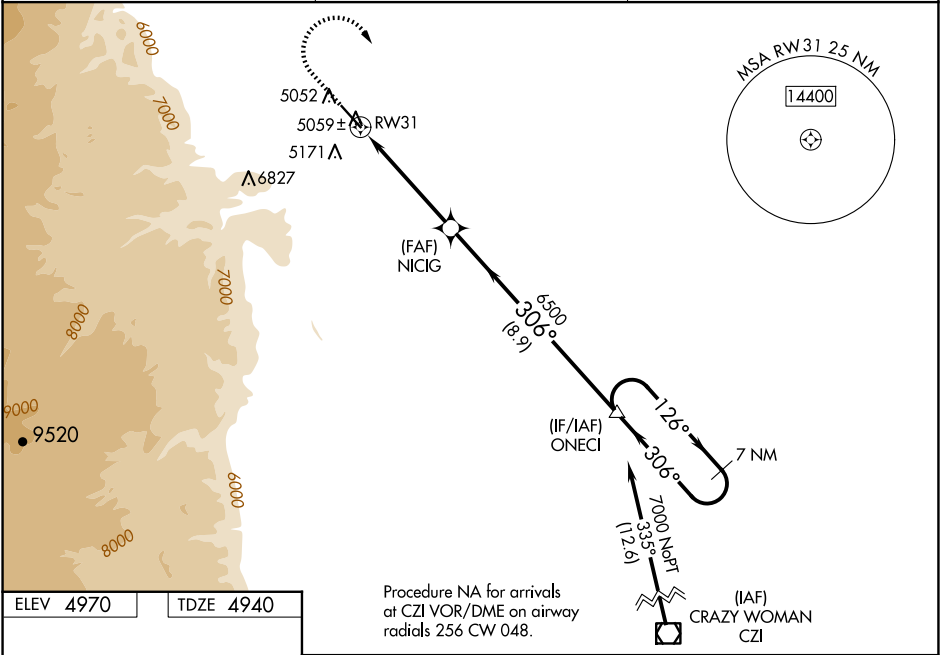
⚠

When Rwy 13 VGSi inop, Circling Rwy 13 NA at night. Baro-VNAV and VDP NA when using Sheridan altimeter setting. For uncompensated Baro-VNAV systems, LNAV/VNAV NA below -27°C (-16°F) or above 48°C (120°F). Circling NA southwest of Rwy 13-31. DME/DME RNP-0.3 NA. When local altimeter setting not received, use Sheridan altimeter setting and increase all DA/MDA 200 feet; increase all LPV, LNAV/VNAV, and all LNAV and Circling Cat C/D visibilities ¾ mile.

MISSED APPROACH:

Climb to 6000, then climbing right turn to 7000 direct ONECI and hold.

ASOS 135.425	SALT LAKE CENTER 127.75 351.9	UNICOM 122.8 (CTAF)
------------------------	---	-------------------------------



ELEV 4970

TDZE 4940

Procedure NA for arrivals at CZI VOR/DME on airway radials 256 CW 048.

6000

7000

ONECI

VGSI and RNAV glidepath not coincident (VGSI Angle 3.00/TCH 42).

* LNAV only

RW31

NICIG

ONECI

1.1 NM

3.7 NM

8.9 NM

CATEGORY	A	B	C	D
LPV DA	5190-¾ 250 (300-¾)			
LNAV/VNAV DA	5275-1⅛ 335 (400-1⅛)			
LNAV MDA	5320-1	380 (400-1)	5320-1⅛	380 (400-1⅛)
CIRCLING	5440-1	470 (500-1)	5460-1½ 490 (500-1½)	5600-2 630 (700-2)

BUFFALO, WYOMING
Amdt 1A 24JUL14

44°23'N-106°43'W

JOHNSON COUNTY (BYG)

RNAV (GPS) RWY 31

NW-1, 07 AUG 2025 to 04 SEP 2025

NW-1, 07 AUG 2025 to 04 SEP 2025