

VOR/DME DJB	APP CRS	Rwy Idg	N/A
113.6	070°	TDZE	N/A
Chan 83		Apt Elev	793

VOR-A

LORAIN COUNTY RGNL (LPR)

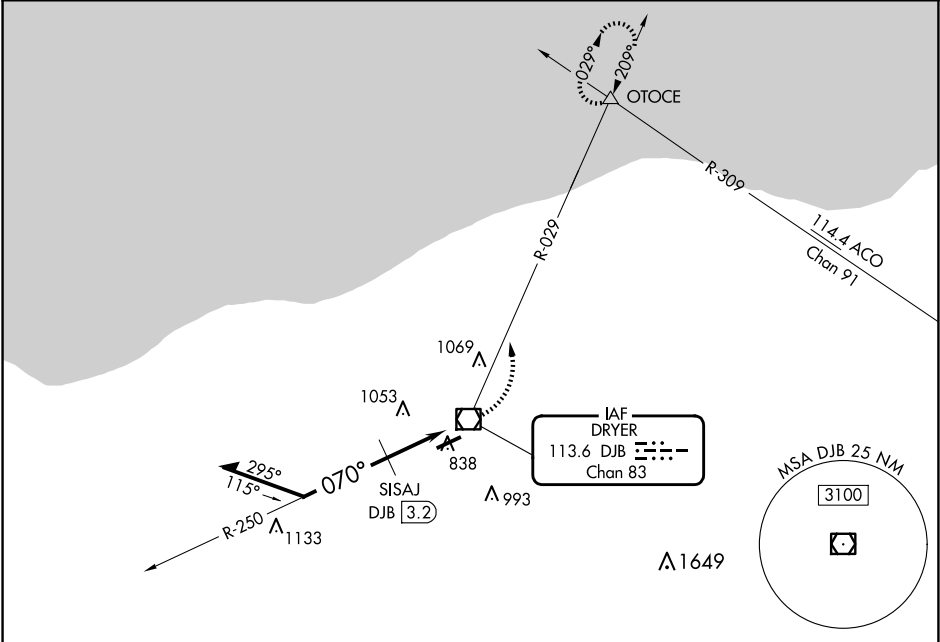
⚠

When local altimeter setting not received, use Cleveland-Hopkins Intl altimeter setting and increase all MDA 40 feet, increase circling Cat C/D visibility ¼ mile.

MISSED APPROACH:

Climbing left turn to 3000 via heading 029° and DJB VOR/DME R-029 direct OTOCE INT and hold.

ASOS	CLEVELAND APP CON	CLNC DEL	UNICOM
118.925	125.35 346.325	125.7	122.7 (CTAF) 0



ELEV 793

Remain within 10 NM

3000

DJB R-029

OTOCE

*1480 when using Cleveland-Hopkins altimeter setting.

CATEGORY	A	B	C	D
CIRCLING	1440-1	647 (700-1)	1440-1¾ 647 (700-1¾)	1440-2 647 (700-2)
SISAJ DME MINIMUMS				
CIRCLING	1300-1 507 (600-1)	1360-1 567 (600-1)	1420-1¾ 627 (700-1¾)	1420-2 627 (700-2)