

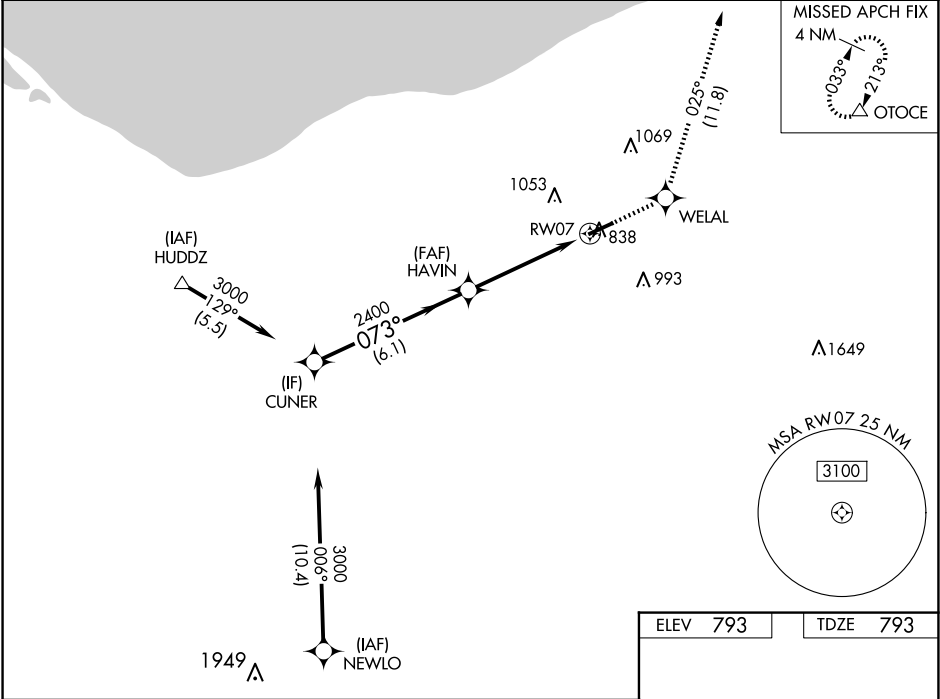
WAAS CH 99612 W07A	APP CRS 073°	Rwy Idg TDZE 793 Apt Elev 793	5002
--	------------------------	---	-------------

RNAV (GPS) RWY 7

LORAIN COUNTY RGNL (LPR)

RNP APCH.	MALSR	MISSED APPROACH: Climb to 3000 direct WELAL and on track 025° to OTOCE and hold.
For uncompensated Baro-VNAV systems, LNAV/VNAV NA below -16°C (4°F) or above 54°C (130°F).		

ASOS 118.925	CLEVELAND APP CON 125.35 346.325	CLNC DEL 125.7	UNICOM 122.7 (CTAF) 0
------------------------	--	--------------------------	---------------------------------



CUNER	HAVIN	WELAL	tr 025°	OTOCE
3000	2400			
GP 3.00° TCH 54				
6.1 NM	3.3 NM	1.5 NM		
CATEGORY	A	B	C	D
LPV DA	993-1/2	200 (200-1/2)		
LNAV/VNAV DA	1133-3/4	340 (400-3/4)		
LNAV MDA	1340-1/2 547 (600-1/2)	1340-1 547 (600-1 1/8)		
CIRCLING	1340-1 547 (600-1)	1360-1 567 (600-1)	1420-1 627 (700-1 3/4)	1420-2 627 (700-2)

