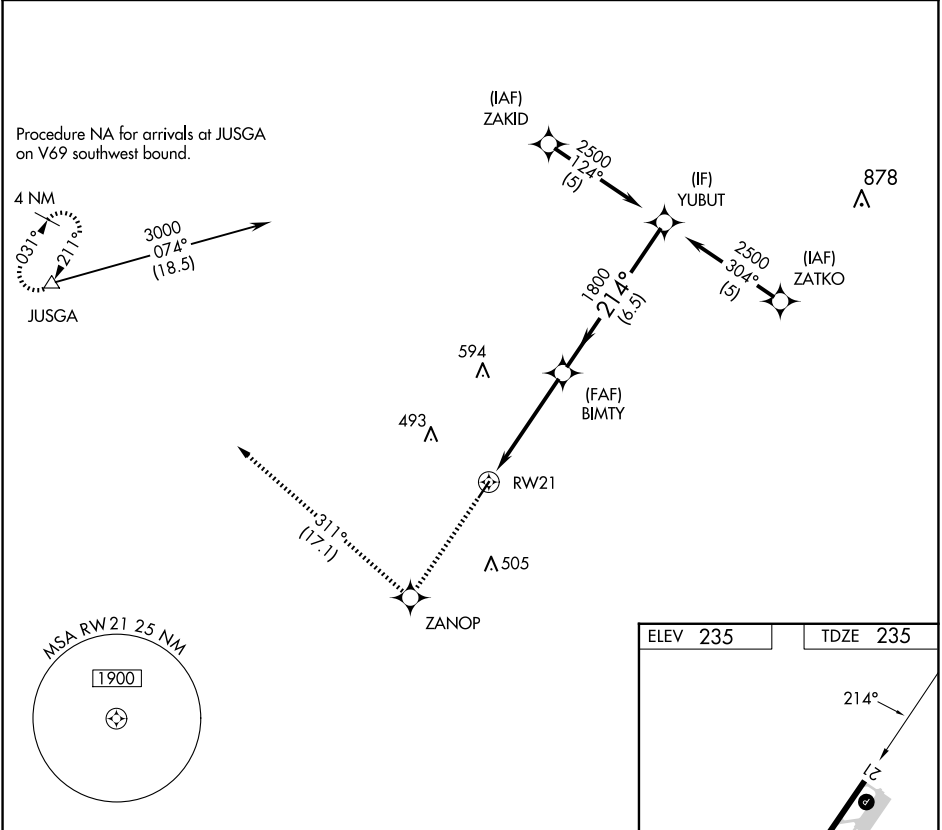


APP CRS	Rwy Idg	3829
214°	TDZE	235
	Apt Elev	235

RNAV (GPS) RWY 21

WARREN MUNI/JOHN B FRAZER JR FLD (3M9)

RNP APCH - GPS.		MISSED APPROACH: Climb to 3000 direct ZANOP and on track 311° to JUSGA and hold.
▼ ▲ NA	Use Monticello altimeter setting. Procedure NA at night.	
LLQ ASOS 133.325	MEMPHIS CENTER 135.875 269.35	CTAF 122.9 0



3000	ZANOP	tr 311°	JUSGA	VGSI and descent angles not coincident (VGSI Angle 3.50/ TCH 40).	
↑	✧		△	BIMTY	YUBUT
RW21		1800	214°	2500	
4.7 NM		6.5 NM			
CATEGORY	A	B	C	D	
LNAV MDA	720-1	485 (500-1)	720-1 3/8 485 (500-1 3/8)	NA	

