

WAAS CH <b>53604</b> <b>W36A</b>	APP CRS <b>360°</b>	Rwy Idg TDZE Apt Elev	<b>5550</b> <b>326</b> <b>333</b>
--	------------------------	-----------------------------	---

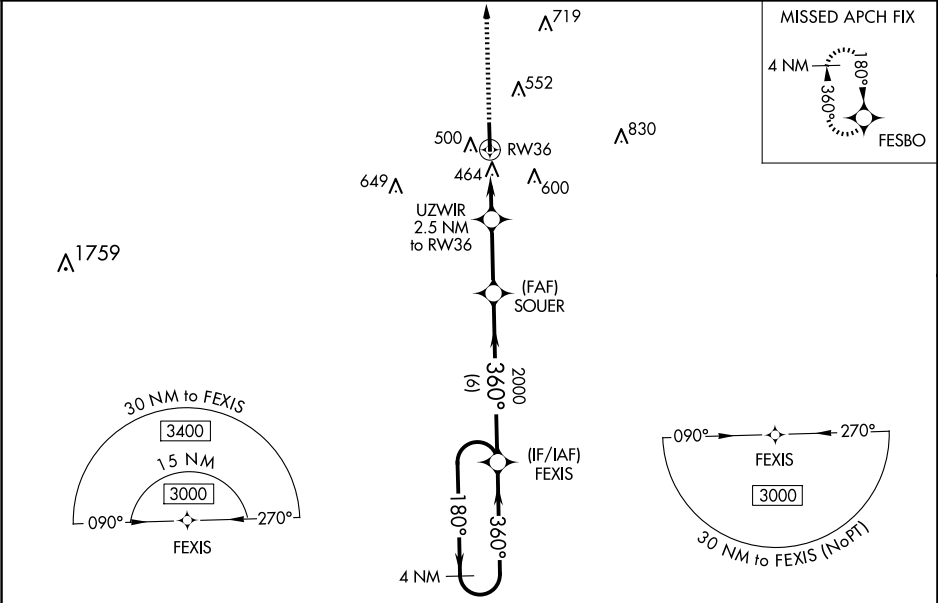
RNAV (GPS) RWY 36  
GEORGE M BRYAN (STF)

RNP APCH-GPS.

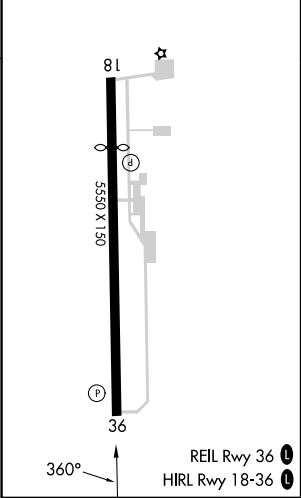
For uncompensated Baro-VNAV systems, LNAV/VNAV NA below -1.5°C or above 54°C .  
When local altimeter setting not received, use Golden Triangle Rgnl altimeter setting and increase LPV DA to 566 feet; increase LNAV/VNAV DA to 690 feet; increase all MDAs 40 feet and LNAV visibility Cat C/D ⅓ SM, and Circling visibility Cat C ¼ SM.  
Baro-VNAV and VDP NA when using Golden Triangle Rgnl altimeter setting.

MISSED APPROACH: Climb to 3400 direct FESBO and hold, continue climb-in-hold to 3400.

AWOS-3PT <b>118.975</b>	COLUMBUS APP CON★ <b>135.6 323.275</b>	CLNC DEL <b>126.25</b>	UNICOM <b>122.7</b> (CTAF)
----------------------------	---	---------------------------	-------------------------------



ELEV 333	TDZE 326
----------	----------



3400	FESBO	UZWIR 2.5 NM to RW36	SOUER	FEXIS	4 NM Holding Pattern	180°	360°	3000	GP 3.00° TCH 40
*LNAV only.		*1.1 NM to RW36	*1140	2000					
		1.1 NM	1.4 NM	2.7 NM	6 NM				
CATEGORY	A	B	C	D					
LPV DA	526-¾	200 (200-¾)							
LNAV/VNAV DA	650-1	324 (400-1)							
LNAV MDA	720-1	394 (400-1)	720-1½	394 (400-½)					
CIRCLING	920-1	587 (600-1)	920-1½	587 (600-½)	1020-2¼	687 (700-2¼)			