

WAAS CH <b>50419</b> <b>W18A</b>	APP CRS <b>180°</b>	Rwy Idg <b>4171</b> TDZE <b>333</b> Apt Elev <b>333</b>
--	------------------------	---

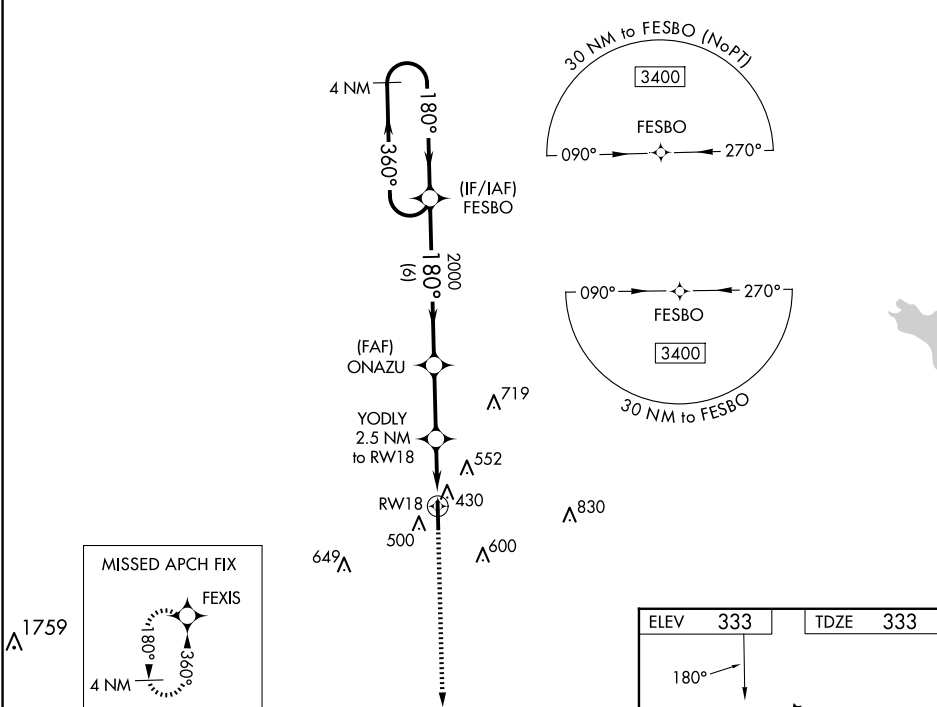
RNAV (GPS) RWY 18  
GEORGE M BRYAN (STP)


RNP APCH-GPS.

For uncompensated Baro-VNAV systems, LNAV/VNAV NA below -15°C or above 54°C. Baro-VNAV and VDP NA when using Golden Triangle Rgnl altimeter setting. Rwy 18 helicopter visibility reduction below ¾ SM NA. When local altimeter setting not received, use Golden Triangle Rgnl altimeter setting and increase LPV DA to 673 feet, increase LNAV/VNAV DA to 656 feet and visibilities all Cats ½ SM. Increase all MDAs 40 feet and LNAV visibility Cat C/D ½ SM, and Circling visibility Cat C ¼ SM.

MISSED APPROACH:  
Climb to 3000 direct  
FEXIS and hold.

AWOS-3PT <b>118.975</b>	COLUMBUS APP CON ★ <b>135.6 323.275</b>	CLNC DEL <b>126.25</b>	UNICOM <b>122.7 (CTAF) 0</b>
----------------------------	--	---------------------------	---------------------------------



<div>4 NM Holding Pattern</div> <div>3400 ← 360° 180° →</div> <div>GP 3.00° TCH 36</div>		FESBO	ONAZU	YODLY 2.5 NM to RW18	3000 ↑	FEXIS 
		180°	2000	*1 NM to RW18	*LNAV only.	
		6 NM	2.6 NM	1.5 NM	1 NM	
CATEGORY	A	B	C	D		
LPV DA	633-1		300 (300-1)			
LNAV/ VNAV DA	616-1		283 (300-1)			
LNAV MDA	680-1		347 (400-1)			
CIRCLING	920-1	587 (600-1)	920-1½ 587 (600-1½)	1020-2¼ 687 (700-2¼)		

