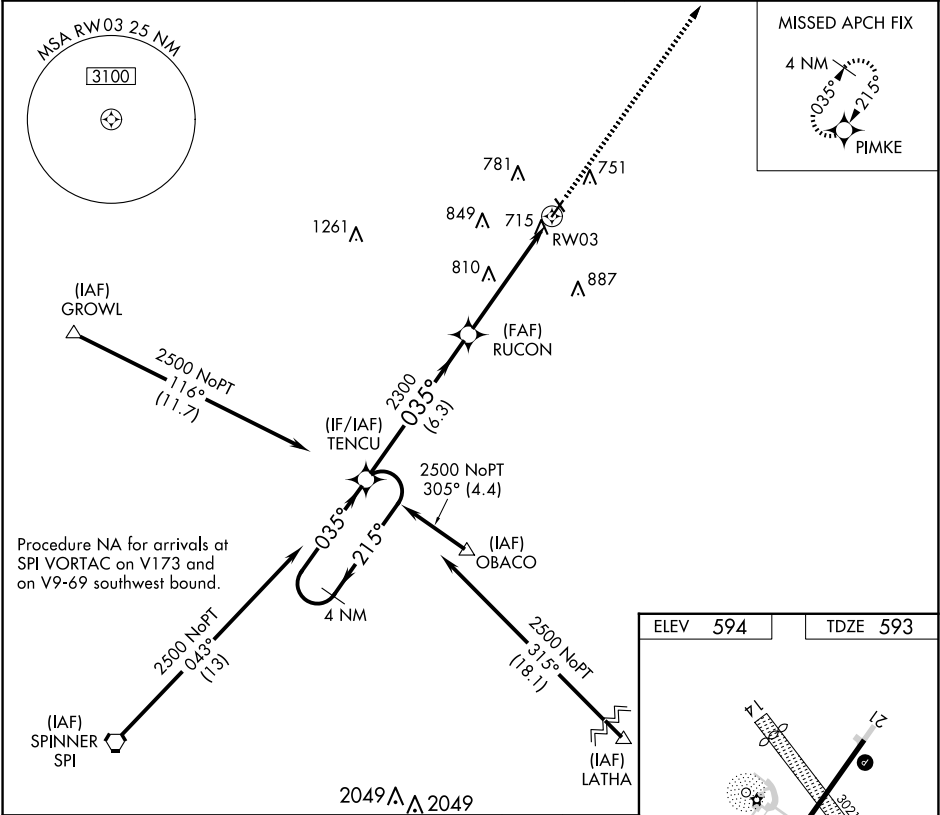


APP CRS	Rwy Ldg	4000
035°	TDZE	593
	Apf Elev	594

RNAV (GPS) RWY 3
LOGAN COUNTY (AAA)

RNP APCH. If local altimeter setting not received, use Springfield, IL altimeter setting and increase all MDAs 60 feet. VDP NA with Springfield, IL altimeter setting. Rwy 3 helicopter visibility reduction below ¾ SM NA.	MISSED APPROACH: Climb to 2700 direct PIMKE and hold.
--	---

AWOS-3 118.775	SAINT LOUIS APP CON ★ 126.15 323.0	UNICOM 122.8 (CTAF) 0
-------------------	---------------------------------------	--------------------------



4 NM Holding Pattern				
TENCU				
VGSi and descent angles not coincident (VGSi Angle 3.50/TCH 26).				
2500				
215°				
035°				
035°				
RUCON				
2300				
3.05°				
TCH 36				
1.5 NM to RW03				
RW03				
2700 PIMKE				
6.3 NM				
3.7 NM				
1.5 NM				
CATEGORY	A	B	C	D
LNAV MDA	1120-1	527 (600-1)	1120-1½ 527 (600-1½)	1120-1¾ 527 (600-1¾)

