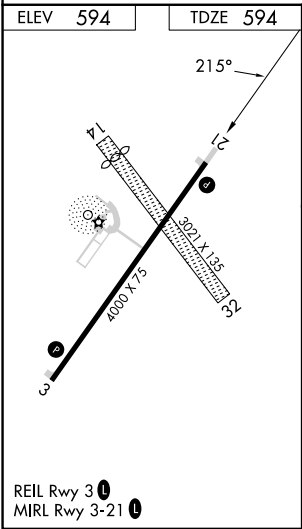
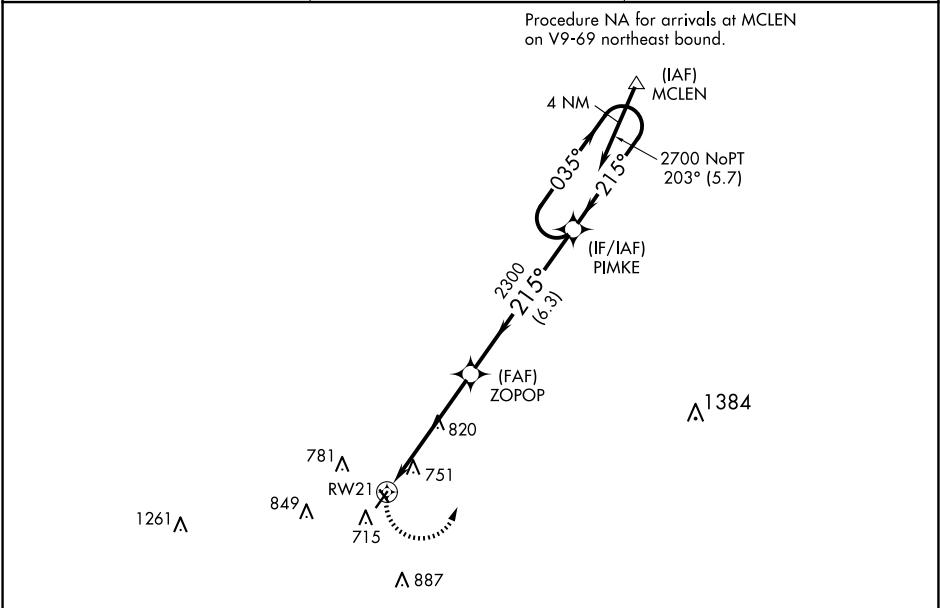


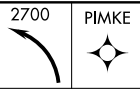
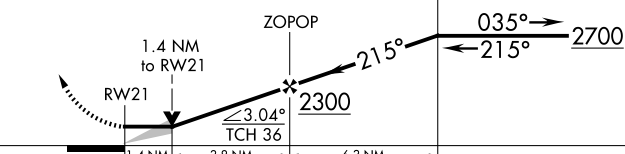
APP CRS	Rwy Ldg	4000
215°	TDZE	594
	Apt Elev	594

RNAV (GPS) RWY 21
LOGAN COUNTY (AAA)

RNP APCH.	MISSED APPROACH: Climbing left turn to 2700 direct PIMKE and hold.
If local altimeter setting not received, use Springfield, IL altimeter setting and increase all MDAs 60 feet. VDP NA with Springfield, IL altimeter setting. Rwy 21 helicopter visibility reduction below 3/4 SM NA.	

AWOS-3 118.775	SAINT LOUIS APP CON ★ 126.15 323.0	UNICOM 122.8 (CTAF) 0
-------------------	---------------------------------------	--------------------------



2700	PIMKE	VGSI and descent angles not coincident (VGSI Angle 3.00/TCH 25).			
					
CATEGORY	A	B	C	D	
LNAV MDA	1080-1	486 (500-1)	1080-1¼ 486 (500-1¼)	1080-1½ 486 (500-1½)	

EC-3, 07 AUG 2025 to 04 SEP 2025

EC-3, 07 AUG 2025 to 04 SEP 2025