

WAAS CH 61019 W02A	APP CRS 026°	Rwy Idg TDZE 926 Apt Elev 946
--	------------------------	---

RNAV (GPS) RWY 2

FARMINGTON RGNL (FAM)

RNP APCH - GPS.

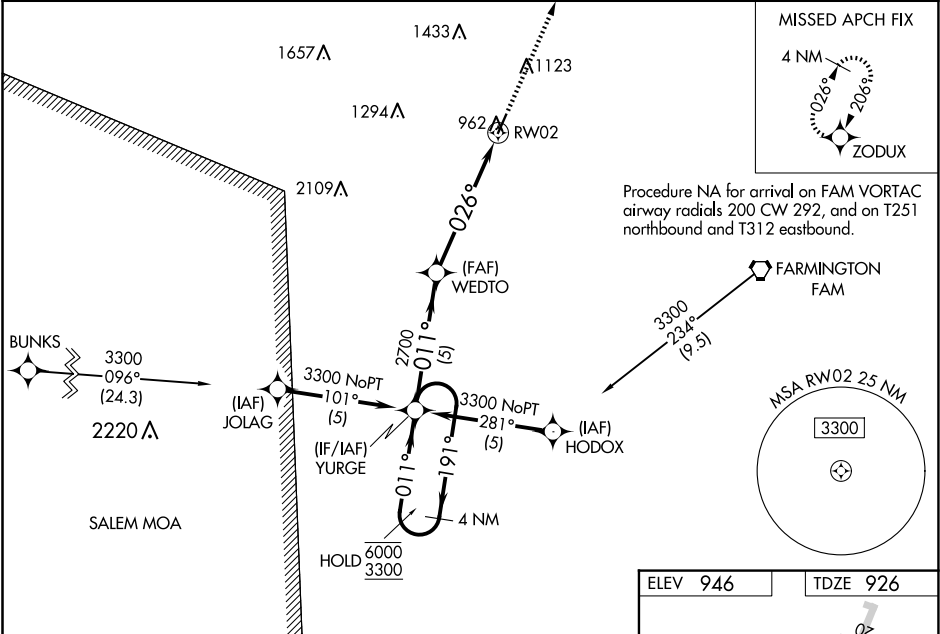
▼

▲

For uncompensated Baro-VNAV systems, LNAV/VNAV NA below -16°C or above 54°C. Rwy 2 helicopter visibility reduction below ¾ SM NA. Circling Rwy 20 NA at night. Baro-VNAV and VDP NA when using Sparta altimeter setting. When local altimeter setting not received, use Sparta altimeter setting and increase LPV DA to 1330 feet and all visibilities ¾ SM. Increase LNAV/VNAV DA to 1525 feet and all visibilities ¾ SM. Increase all MDAs 160 feet and LNAV and Circling Cat B visibility ¼ SM.

MISSED APPROACH: Climb to 3100 direct ZODUX and hold.

AWOS-3PT 119.275	KANSAS CITY CENTER 127.475 346.275	UNICOM 122.8 (CTAF) 0
----------------------------	--	---------------------------------



4 NM Holding Pattern

YURGE

WEDTO

3100 ZODUX

6000 3300 191° 011°

GP 3.00° TCH 42

2700 011° 2700 026° 1.8 NM to RW02

5 NM 3.7 NM 1.8 NM

CATEGORY	A	B	C	D
LPV DA	1176-1	250 (300-1)	NA	
LNAV/VNAV DA	1371-1⅜	445 (500-1⅜)	NA	
LNAV MDA	1540-1	614 (600-1)	NA	
CIRCLING	1540-1	594 (600-1)	NA	

