

LOC I-HBJ <b><u>111.35</u></b>	APP CRS <b>060°</b>	Rwy Idg TDZE Apt Elev	<b>6406</b> <b>616</b> <b>616</b>
-----------------------------------	------------------------	-----------------------------	---

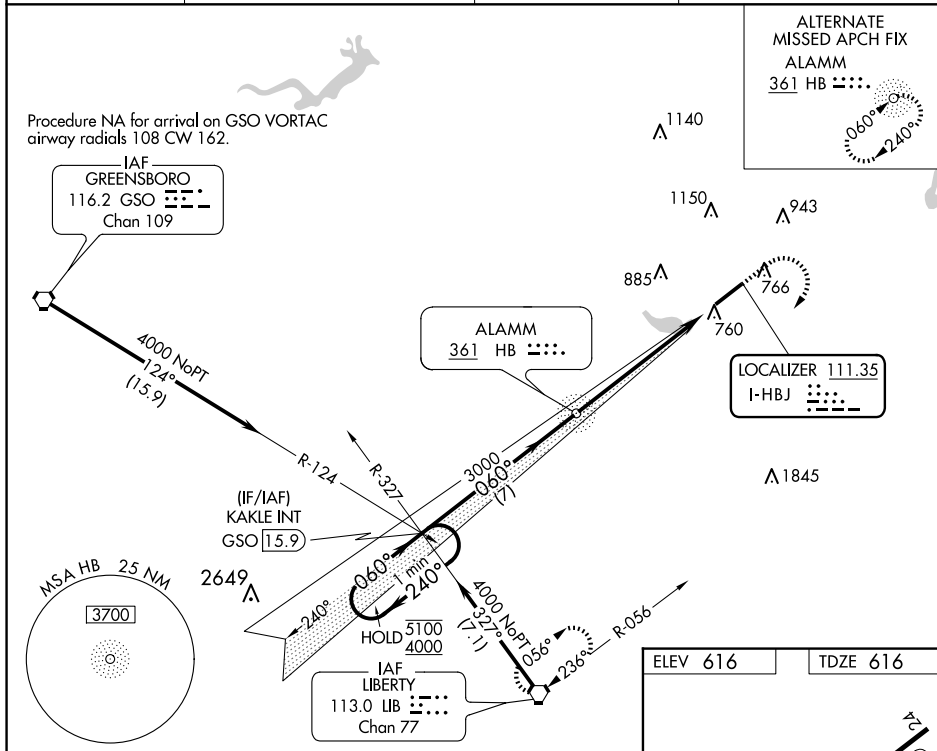
ILS Z or LOC Z RWY 6  
BURLINGTON/ALAMANCE RGNL (BUY)

ADF required for LOC only.

**T**  
**A** NA Rwy 6 helicopter visibility reduction below  $\frac{3}{4}$  SM NA.

**MISSED APPROACH:** Climb to 1600 then climbing right turn to 3000 direct LIB VORTAC and hold.

ASOS <b>135.325</b>	GREENSBORO APP CON <b>126.6 327.075</b>	CLNC DEL <b>120.25</b>	UNICOM <b>122.975 (CTAF) 0</b>
------------------------	--	---------------------------	-----------------------------------



SE-2, 07 AUG 2025 to 04 SEP 2025

SE-2, 07 AUG 2025 to 04 SEP 2025

<p>VGSI and ILS glidepath not coincident (VGSI Angle 3.00/TCH 45).</p> <p>One Minute Holding Pattern</p> <p>KAKLE INT</p> <p>HB NDB</p> <p>2743</p> <p>3000</p> <p>7 NM</p> <p>6.4 NM</p> <p>1600</p> <p>3000</p> <p>LIB</p>				
CATEGORY	A	B	C	D
S-ILS 6	866-¾ 250 (300-¾)			
S-LOC 6	1160-1	544 (600-1)	1160-1⅝	544 (600-1⅝)
<b>C</b> CIRCLING	1160-1	544 (600-1)	1520-2¾ 904 (1000-2¾)	1520-3 904 (1000-3)

BURLINGTON, NORTH CAROLINA  
Amdt 2C 12AUG21

36°03'N-79°28'W

BURLINGTON/ALAMANCE RGNL (BUY)  
ILS Z or LOC Z RWY 6