

WAAS CH <b>49115</b> <b>W36A</b>	APP CRS <b>001°</b>	Rwy Idg <b>5150</b> TDZE <b>1627</b> Apt Elev <b>1630</b>
----------------------------------------	------------------------	-----------------------------------------------------------------

## RNAV (GPS) RWY 36

LAKELAND/NOBLE F LEE MEML FLD (ARV)

RNP APCH.

**T** Circling Rwy 10, 28 NA at night. Rwy 36 helicopter visibility reduction below  $\frac{3}{4}$  SM NA.  
**A** Inop table does not apply. For uncompensated Baro-VNAV systems, LNAV/VNAV NA below -18°C or above 54°C.

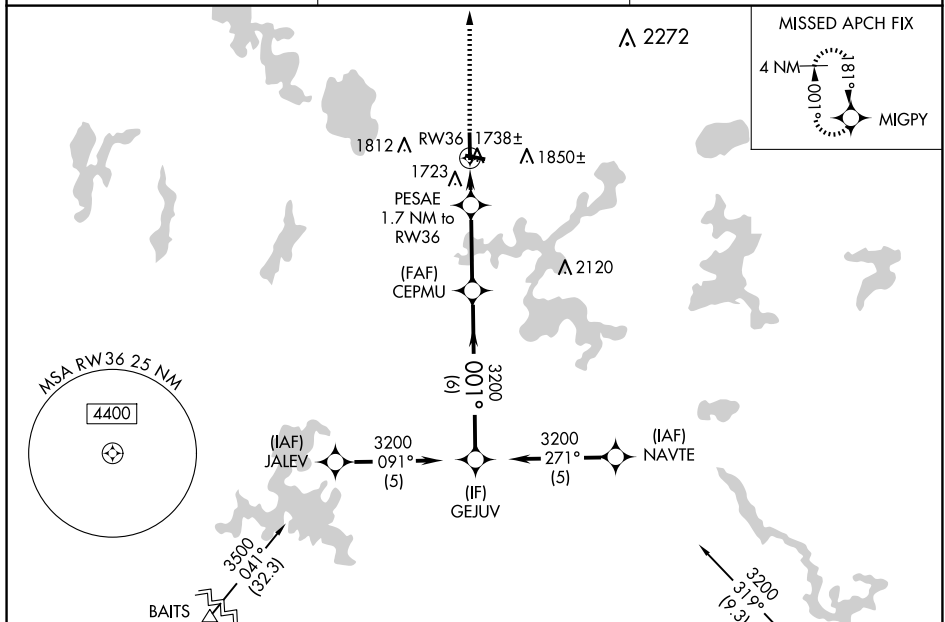
MALSR



**MISSED APPROACH:**  
Climb to 3300 direct  
MIGPY and hold.

AWOS-3  
121.125

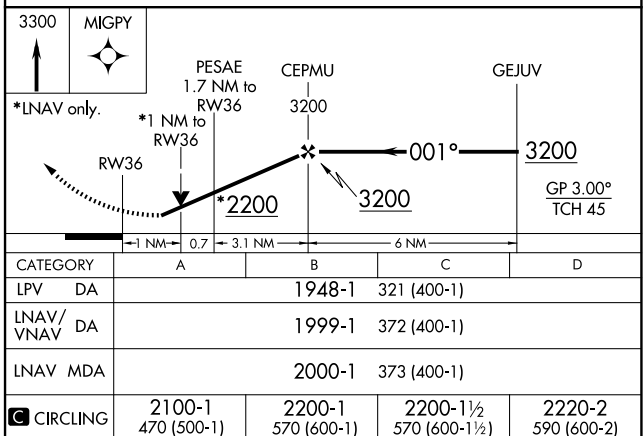
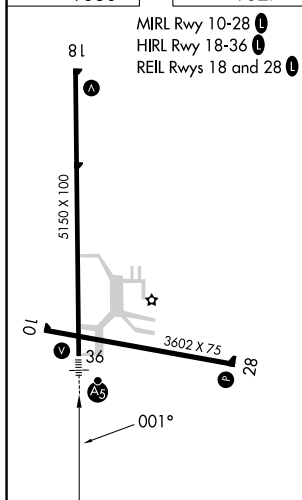
MINNEAPOLIS CENTER  
133.65 281.5

UNICOM  
122.7 (CTAF) **L**

ELEV 1630

TDZE 1627

MIRL Rwy 10-28 **L**  
HIRL Rwy 18-36 **L**  
REIL Rwy 18 and 28 **L**



## RNAV (GPS) RWY 36