

APP CRS	Rwy Idg	<b>3602</b>
<b>283°</b>	TDZE	<b>1625</b>
	Apt Elev	<b>1630</b>

# RNAV (GPS) RWY 28

## LAKELAND/NOBLE F LEE MEML FLD (ARV)

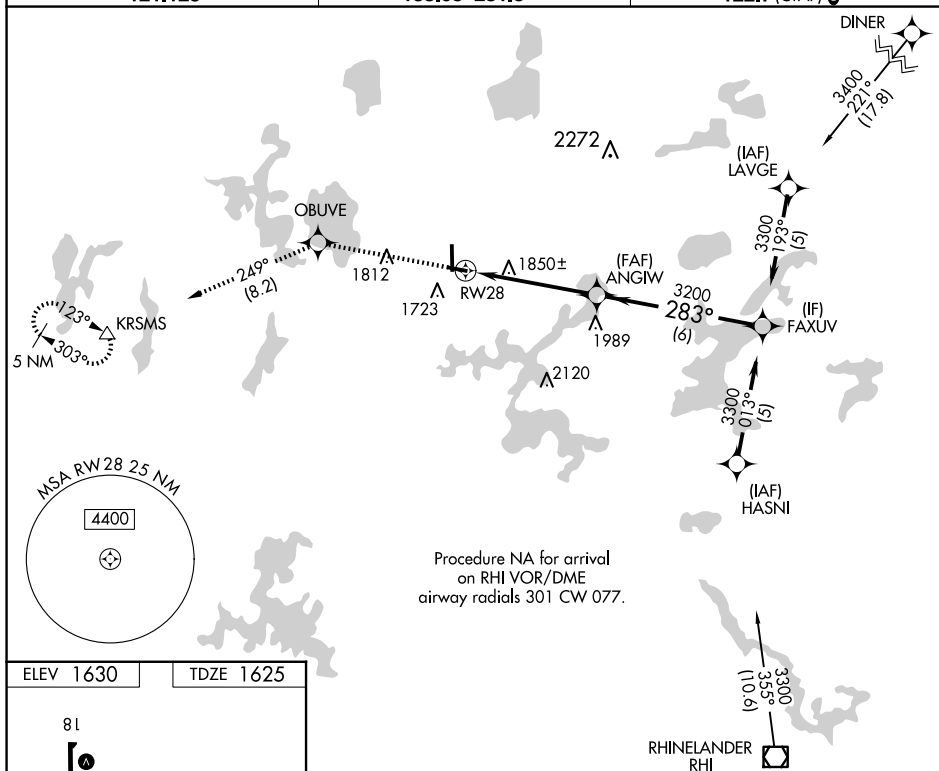
RNP APCH.

- T** Rwy 28 helicopter visibility reduction below 1 SM NA.  
**A** Straight-in and Circling Rwy 28 NA at night, Circling Rwy 10 NA at night.

**MISSED APPROACH:** Climb to 6000  
direct OBUVE and on track 249° to  
KRSMS and hold.

AWOS-3  
121.125

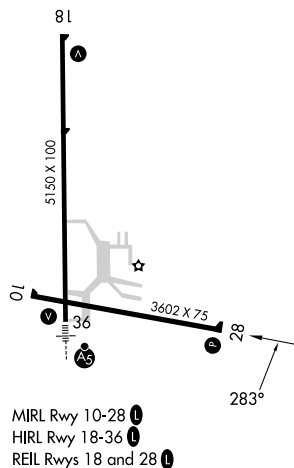
MINNEAPOLIS CENTER  
133.65 281.5

UNICOM  
122.7 (CTAF) 


Procedure NA for arrival  
on RHI VOR/DME  
airway radials 301 CW 077.

ELEV 1630


TDZE 1625



MIRL Rwy 10-28 **L**  
HIRL Rwy 18-36 **L**  
REIL Rwy 18 and 28 **L**

6000	OBUVE	tr 249°	KRSMS
			

Profile view of the road showing a vertical curve. The road starts at a grade of 3200, rises to a peak of 3300, and then descends to a grade of 3200. The vertical curve length is 37 feet. The angle of the first grade is 28.3 degrees. The angle of the second grade is 3.04 degrees. The road is labeled RW28 and ANGIW.

CATEGORY	4.8 NM		6 NM	
	A	B	C	D
LNAV MDA	2140-1	515 (600-1)	2140-1½ 515 (600-1½)	2140-1¾ 515 (600-1¾)
 CIRCLING	2140-1 510 (600-1)	2200-1 570 (600-1)	2200-1½ 570 (600-1½)	2220-2 590 (600-2)

MINOCQUA-WOODRUFF, WISCONSIN

Orig-C 10OCT19

LAKELAND/NOBLE F LEE MEML FLD (ARV)

45°56'N-89°44'W

## RNAV (GPS) RWY 28