

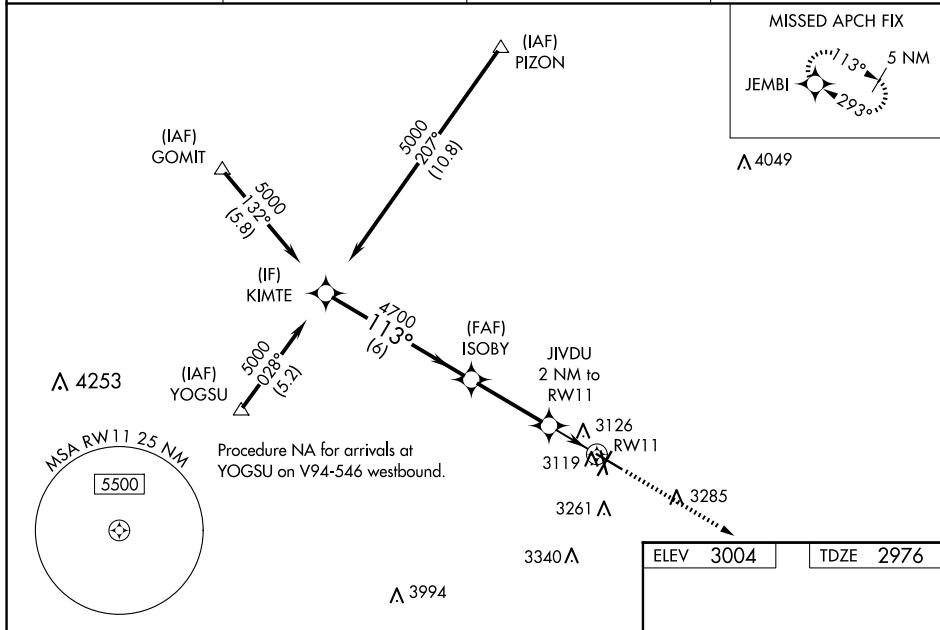


| | | |
|--|------------------------|---|
| WAAS CH 45618 W11A | APP CRS 113° | Rwy Idg 6200 TDZE 2976 Apt Elev 3004 |
|--|------------------------|---|

RNAV (GPS) RWY 11
ODESSA-SCHLEMEYER FLD (ODO)

| | |
|---|---|
| <p>  Circling to Rwy 16 and 20 NA at night. For uncompensated Baro-VNAV systems, LNAV/VNAV NA below -20°C (-4°F) or above 54°C (130°F). DME/DME RNP-0.3 NA. Circling NA S of Rwy 2 and 34. When local altimeter setting not received use Midland Intl Air and Space Port altimeter setting and increase all DA 41 feet and all MDA 60 feet and increase LNAV/VNAV all Cts visibility 1/8 mile, LNAV Cat C and D and Circling Cat C visibility 1/4 mile. VDP NA with Midland Intl Air and Space Port altimeter setting. Baro-VNAV NA when using Midland Intl Air and Space Port altimeter setting. </p> | <p> MALS  </p> <p> MISSED APPROACH: Climb to 5000 direct JEMBI and hold. </p> |
|---|---|

| | | | |
|------------------------|---|--------------------------|--|
| ASOS 119.275 | MIDLAND APP CON ★ 124.6 256.875 | CLNC DEL 121.7 | UNICOM 123.0 (CTAF) 0 |
|------------------------|---|--------------------------|--|



| CATEGORY | A | B | C | D |
|--------------|------------|-------------|-------------------------------|-----------------------|
| LPV DA | 3176-3/4 | | 200 (200-3/4) | |
| LNAV/VNAV DA | 3347-1 1/4 | | 371 (400-1 1/4) | |
| LNAV MDA | 3380-1 | 404 (400-1) | 3380-1 1/8 | 404 (400-1 1/8) |
| CIRCLING | 3460-1 | 456 (500-1) | 3600-1 1/2 596 (600-1 1/2) | 3600-2 596 (600-2) |