

WAAS CH 69332 W36A	APP CRS 001°	Rwy Idg 4306 TDZE 1734 Apt Elev 1737
--	------------------------	---

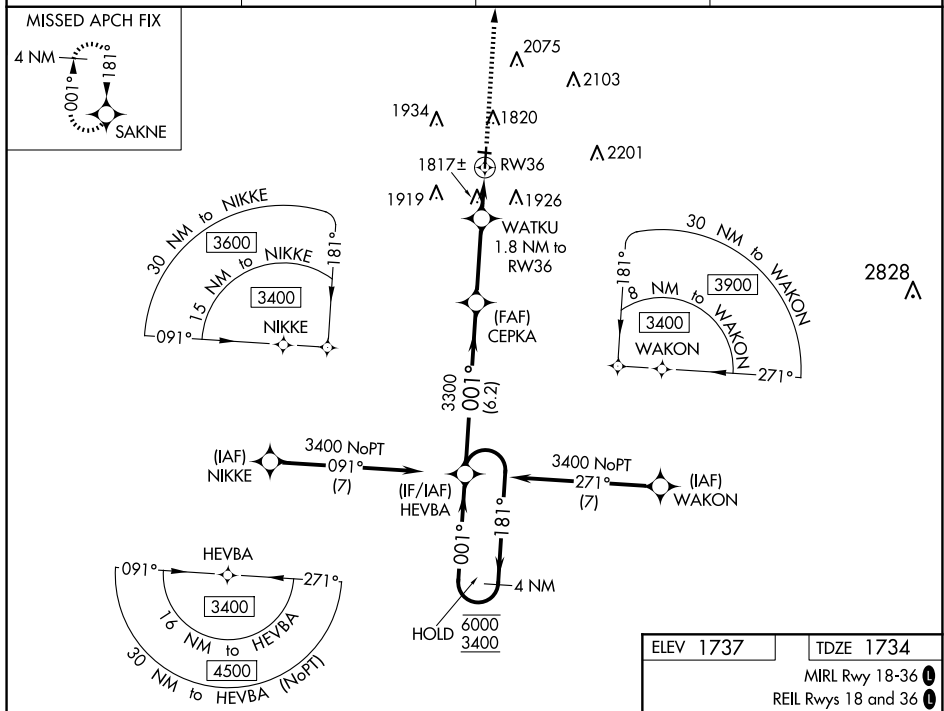
RNAV (GPS) RWY 36
PIPESTONE MUNI (PQN)

RNP APCH-GPS.

T Circling NA to Rwy 9 and 27. For uncompensated Baro-VNAV
A systems, LNAV/VNAV NA below -18°C or above 54°C.

MISSED APPROACH: Climb to 3800 direct SAKNE and hold.

AWOS-3PT 118.375	MINNEAPOLIS CENTER 132.05 317.4	GCO 121.725	UNICOM 122.8 (CTAF) 0
----------------------------	---	-----------------------	---------------------------------



4 NM Holding Pattern

HEVBA

CEPKA

WATKU 1.8 NM to RW36

1 NM to RW36

1 NM

6.2 NM

3 NM

0.8

1 NM

3800

SAKNE

6000

3400

181°

001°

001°

3300

2340

GP 3.00°

TCH 30

CATEGORY	A	B	C	D
LPV DA	1934-1	200 (200-1)		NA
LNAV/ VNAV	1984-1	250 (300-1)		NA
LNAB MDA	2080-1	346 (400-1)		NA
CIRCLING	2200-1 463 (500-1)	2280-1 543 (600-1)	2280-1½ 543 (600-1½)	NA

