

WAAS
CH **82700**
W36A

APP CRS
356°

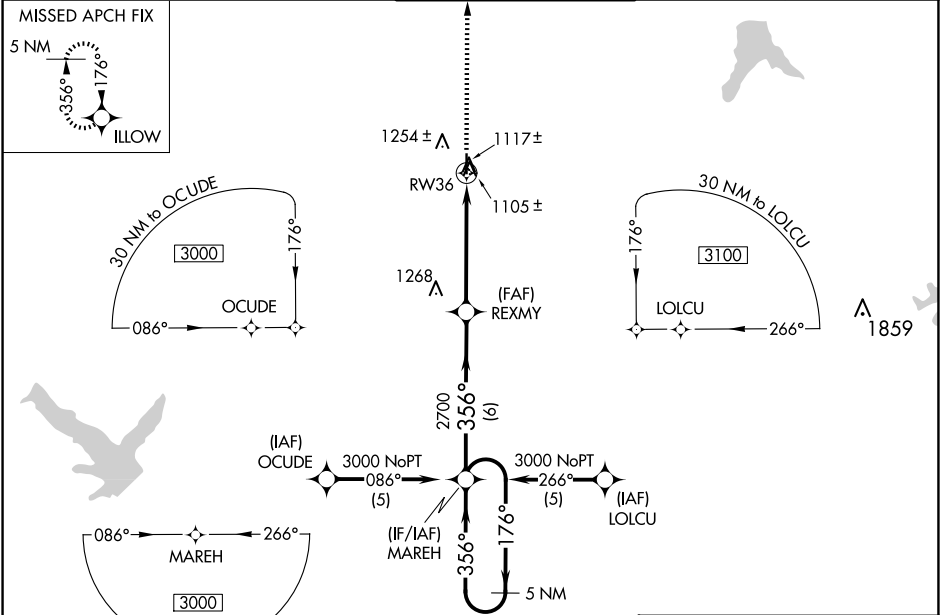
Rwy Idg **4097**
TDZE **1086**
Apt Elev **1096**

RNAV (GPS) RWY 36
JOHNSON COUNTY EXEC (OJC)

RNP APCH - GPS.
For uncompensated Baro-VNAV systems, LNAV/VNAV NA below -17°C or above 54°C. Rwy 36 helicopter visibility reduction below ¾ SM NA.
For inop ALS, increase LPV, LNAV/VNAV and LNAV all Cats visibility to 1 SM.

MALSR
MISSED APPROACH: Climb to 3100 direct ILLOW and hold.

ATIS 119.35	KANSAS CITY APP CON 118.9 251.075	EXECUTIVE TOWER* 126.0 (CTAF) 225.4	GND CON 121.6	UNICOM 122.95
-----------------------	---	---	-------------------------	-------------------------



ELEV 1096

TDZE 1086

5 NM Holding Pattern

MAREH

3000

176°

356°

GP 3.00°

TCH 40

2700

356°

2700

1 NM to RW36

RW36

6 NM

4 NM

1 NM

3100

ILLOW

CATEGORY	A	B	C	D
LPV DA	1336-¾	250 (300-¾)		NA
LNAV/VNAV DA	1355-¾	269 (300-¾)		NA
LNAV MDA	1400-¾	314 (400-¾)		NA
CIRCLING	1620-1	524 (600-1)	1620-1½ 524 (600-1 ½)	NA

81

1151

TWR 1157

4097 X 75

1.1% UP

36

356°

MIRL Rwy 18-36