

OLATHE, KANSAS

AL-5687 (FAA)

24305

LOC/DME I-OJC <u>111.1</u> Chan 48	APP CRS 176°	Rwy Idg 4097 TDZE 1096 Apt Elev 1096
---	------------------------	---

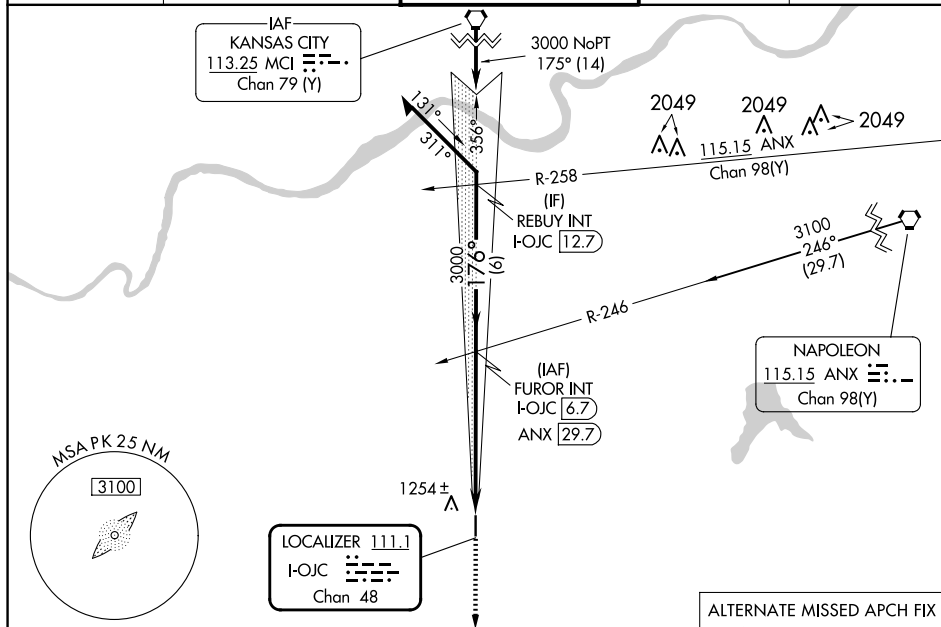
LOC RWY 18
JOHNSON COUNTY EXEC (OJC)

ADF required.

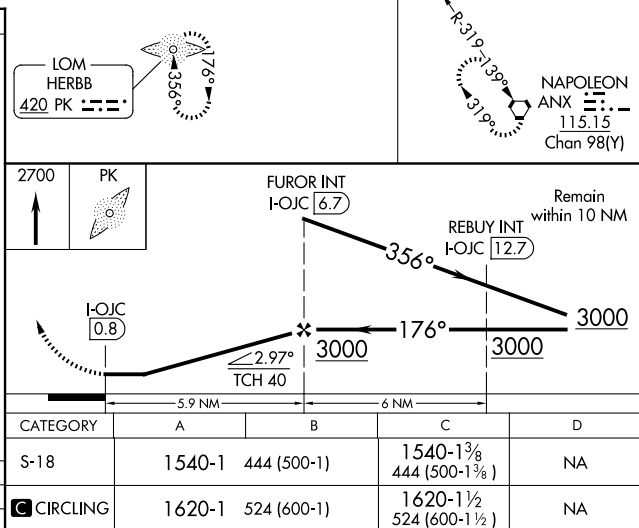
T
A NA

MISSED APPROACH: Climb to 2700 direct HERBB LOM and hold.

ATIS 119.35	KANSAS CITY APP CON 118.9 251.075	EXECUTIVE TOWER ★ 126.0 (CTAF) 0 225.4	GND CON 121.6	UNICOM 122.95
-----------------------	---	--	-------------------------	-------------------------



FAF to MAP 5.9 NM					
Knots	60	90	120	150	180
Min:Sec	5:54	3:56	2:57	2:22	1:58



OLATHE, KANSAS
Amdt 8A 21MAY20

38°51'N-94°44'W

JOHNSON COUNTY EXEC (OJC)
LOC RWY 18

NC-2, 07 AUG 2025 to 04 SEP 2025

NC-2, 07 AUG 2025 to 04 SEP 2025