

INDIANOLA, MISSISSIPPI

AL-5685 (FAA)

21224

VORTAC SQS 114.7 Chan 94	APP CRS 271°	Rwy Idg TDZE Apt Elev	N/A N/A 126
--	------------------------	-----------------------------	--

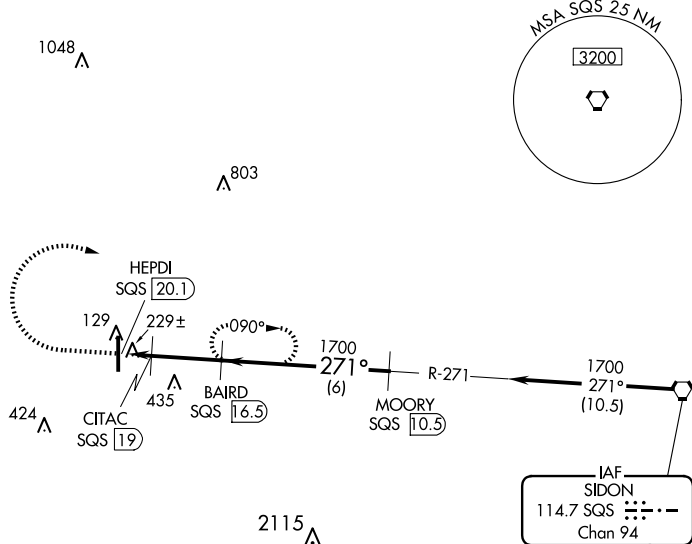
VOR/DME-A
INDIANOLA MUNI (IDL)

TANA

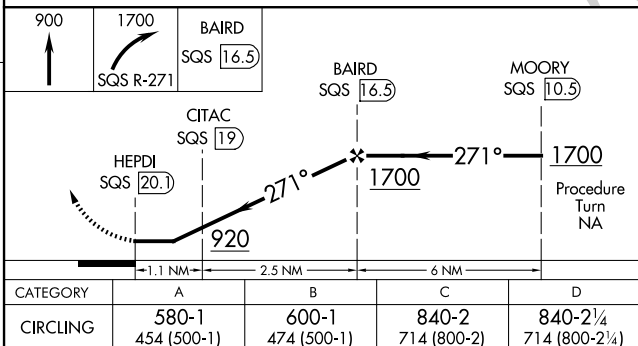
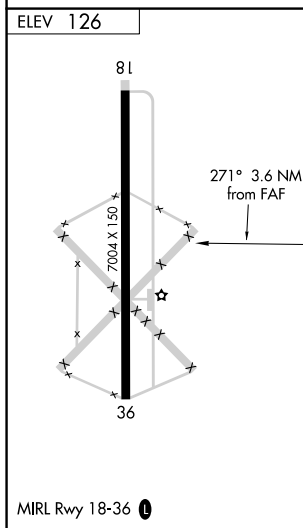
Use Greenville altimeter setting, when not received, use Greenwood altimeter setting and increase all MDA 40 feet and Circling Cat C/D visibility $\frac{1}{4}$ SM. Circling to Rwy 18 NA at night. Helicopter visibility reduction below 1 SM NA.

MISSED APPROACH: Climb to 900, then climbing right turn to 1700 on SQS VORTAC R-271 to BAIRD/16.50 DME and hold.

GLH ASOS 125.525	MEMPHIS CENTER 135.875 269.35	UNICOM 122.8 (CTAF) 0
----------------------------	---	---------------------------------



Procedure NA for arrivals
at SQS VORTAC
on airway radial 273.



INDIANOLA, MISSISSIPPI
Amdt 9D [2AUG21]

33°29'N-90°40'W

INDIANOLA MUNI (IDL)
VOR/DME-A

SC-4, 07 AUG 2025 to 04 SEP 2025

SC-4, 07 AUG 2025 to 04 SEP 2025