

WAAS CH <b>60903</b> <b>W28A</b>	APP CRS <b>285°</b>	Rwy Idg TDZE <b>967</b> Apt Elev <b>968</b>
--	------------------------	---

RNAV (GPS) RWY 28

STATESVILLE RGNL (SVH)

RNP APCH - GPS.

▼

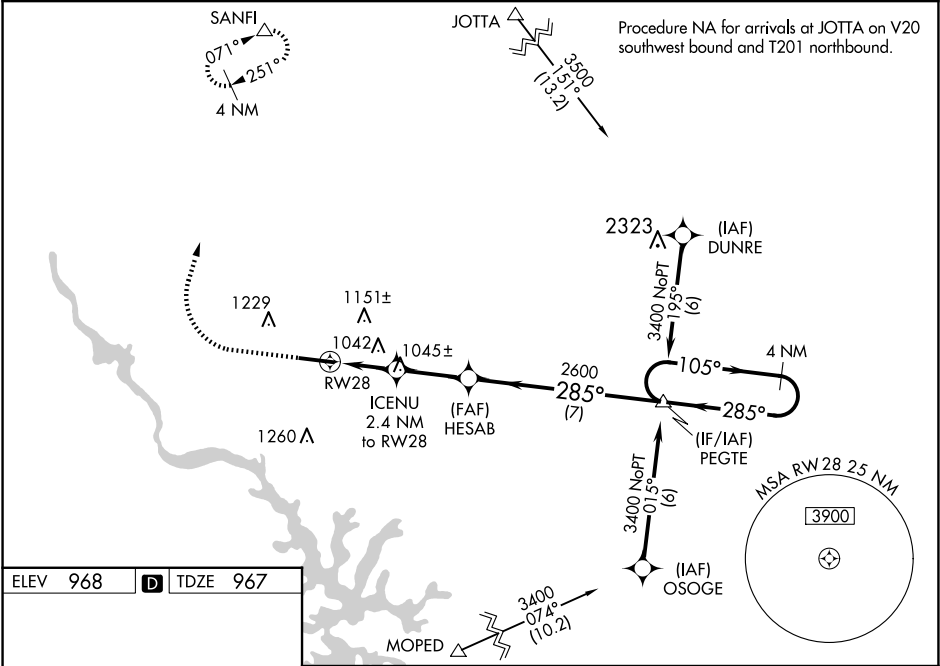
⚠

For uncompensated Baro-VNAV systems, LNAV/VNAV NA below -16°C or above 54°C.  
When local altimeter setting not received, use Lincolnton altimeter setting and increase LPV DA to 1218, LNAV/VNAV DA to 1269, and all MDA 60 feet; increase LNAV/VNAV all Cats and LNAV Cats C/D visibility  $\frac{1}{8}$ , and Circling Cat C  $\frac{1}{4}$  mile. VDP and Baro-VNAV NA when using Lincolnton altimeter setting. For inop MALS, increase LNAV/VNAV all Cats and LNAV Cats C/D visibility to  $\frac{3}{8}$  mile. For inop MALS when using Lincolnton altimeter setting, increase LNAV/VNAV all Cats and LNAV Cats C/D visibility to 1 mile.

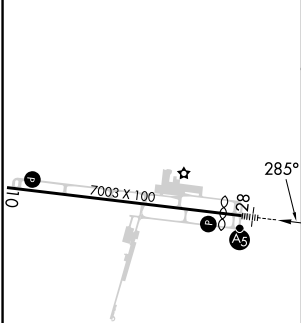
MALS

MISSED APPROACH:  
Climb to 1380 then climbing right turn to 3400 direct SANFI and hold.

AWOS-3 <b>119.225</b>	ATLANTA CENTER <b>125.15 263.0</b>	UNICOM <b>123.075 (CTAF) ①</b>
--------------------------	---------------------------------------	-----------------------------------



ELEV 968	<b>D</b>	TDZE 967
----------	----------	----------



<div>1380 3400 SANFI</div> <div></div> <div></div> <div></div>				
<div>HE\$AB 2600</div> <div></div>				
<div>ICENU 2.4 NM to RW28</div> <div></div>				
<div>PEGTE 4 NM Holding Pattern</div> <div></div>				
<div>GP 3.00° TCH 50</div> <div></div>				
CATEGORY	A	B	C	D
LPV DA		1167- $\frac{3}{4}$	200 (200- $\frac{3}{4}$ )	
LNAV/VNAV DA		1218- $\frac{3}{4}$	251 (300- $\frac{3}{4}$ )	
LNAV MDA		1300- $\frac{3}{4}$	333 (400- $\frac{3}{4}$ )	
CIRCLING	1420-1 452 (500-1)	1540-1 572 (600-1)	1540-1 $\frac{1}{2}$ 572 (600-1 $\frac{1}{2}$ )	1560-2 592 (600-2)