

LOC/DME I-SVH	APP CRS	Rwy Idg	6453
111.75	285°	TDZE	967
Chan 54 (Y)		Apt Elev	968

ILS Z or LOC Z RWY 28

STATESVILLE RGNL (SVH)

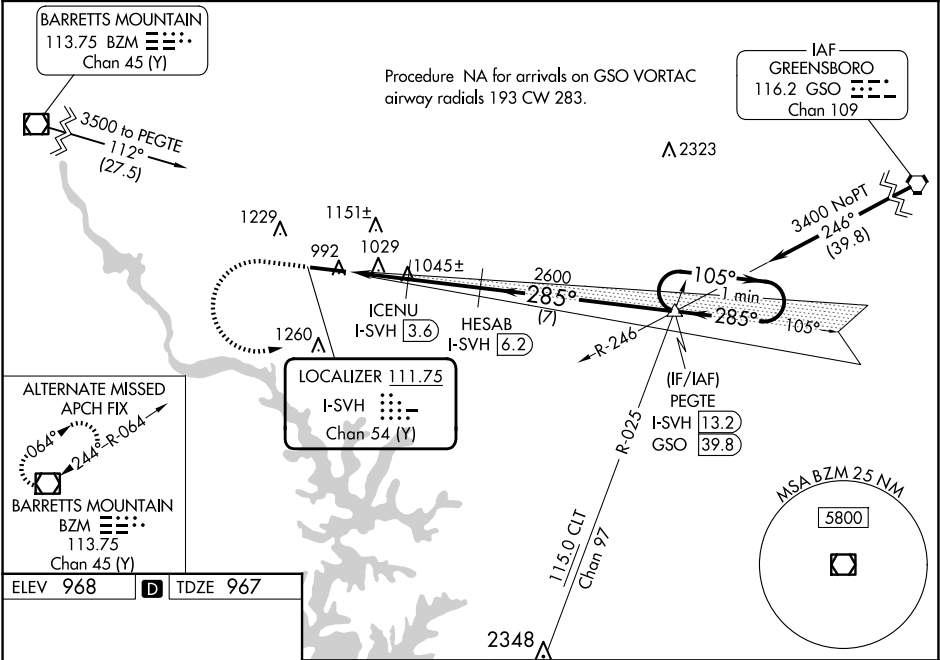
DME required.

When local altimeter setting not received, use Lincolnton altimeter setting and increase ILS DA to 1219 and all MDA 60 feet; increase S-LOC 28 Cats C/D visibility ⅓ mile and Circling Cat C visibility ¼ mile. VDP NA when using Lincolnton altimeter setting. For inop MALSR when using Lincolnton altimeter setting, increase S-ILS 28 all Cats visibility to ⅔ mile and S-LOC 28 Cats C/D visibility to 1 mile.

MALSR

MISSED APPROACH: Climb to 1700 then climbing left turn to 3400 on heading 105° and CLT VOR/DME R-025 to PEGTE INT/I-SVH 13.2 DME and hold.

AWOS-3 119.225	ATLANTA CENTER 125.15 263.0	UNICOM 123.075 (CTAF) 0
-------------------	--------------------------------	----------------------------



1700 3400 CLT PEGTE

hdg 105° R-025

HESAB I-SVH 6.2 PEGTE I-SVH 13.2

One Minute Holding Pattern

105° 285° 3400

GS 3.00° TCH 50

0.8 1.6 2.6 NM 7 NM

CATEGORY	A	B	C	D
S-ILS 28	1167-½	200 (200-½)		
S-LOC 28	1280-½	313 (400-½)		
CIRCLING	1420-1 452 (500-1)	1540-1 572 (600-1)	1540-1½ 572 (600-1½)	1560-2 592 (600-2)

REIL Rwy 10 0

HIRL Rwy 10-28 0