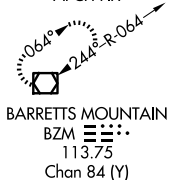


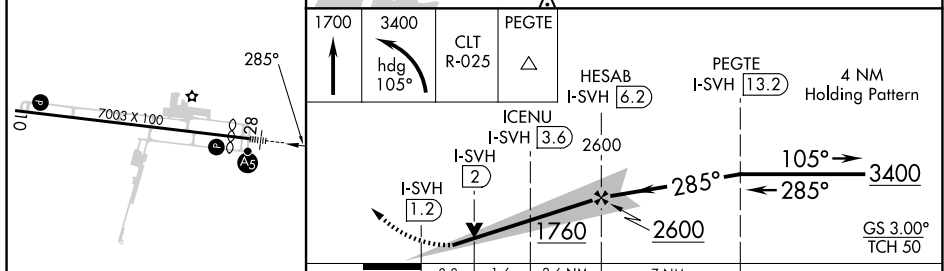
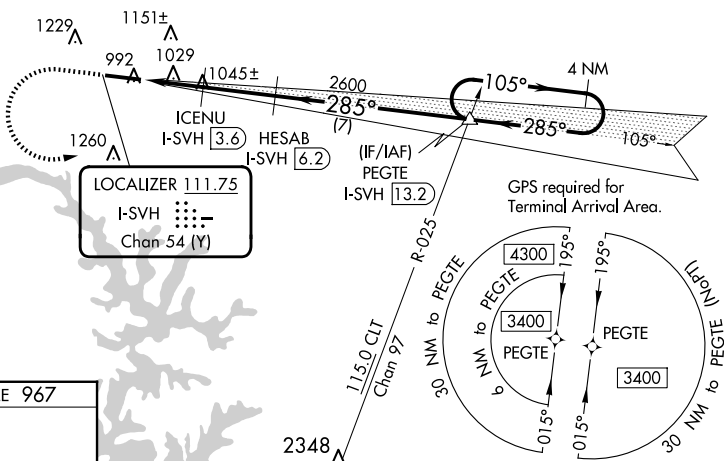
ILS Y or LOC Y RWY 28  
STATESVILLE RGNL (SVH)

**MISSED APPROACH:** Climb to 1700 then climbing left turn to 3400 on heading 105° and on CLT VOR/DME R-025 to PEGTE INT/I-SVH 13.2 DME and hold.

ALTERNATE MISSED  
APCH FIX



Δ 2323



CATEGORY				
	A	B	C	D
S-ILS 28	1167- $\frac{1}{2}$ 200 (200- $\frac{1}{2}$ )			
S-LOC 28	1280- $\frac{1}{2}$ 313 (400- $\frac{1}{2}$ )			
<b>C</b> CIRCLING	1420-1 452 (500-1)	1540-1 572 (600-1)	1540-1 $\frac{1}{2}$ 572 (600-1 $\frac{1}{2}$ )	1560-2 592 (600-2)

SE-2, 07 AUG 2025 to 04 SEP 2025