

VOR/DME GFK
114.3
Chan **90**

APP CRS
097°

Rwy Idg
TDZE **896**
Apt Elev **900**

VOR/DME RWY 13

CROOKSTON MUNI/KIRKWOOD FLD (CKN)

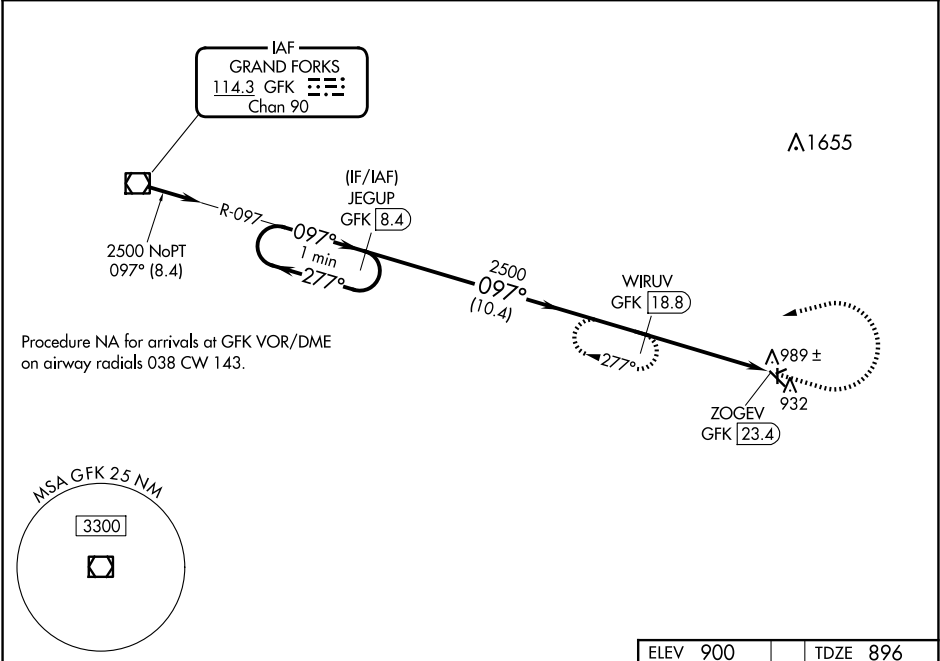
When local altimeter setting not received, use Grand Forks Intl altimeter setting. Circling Rwy's 6, 24, 17, 35 NA at night.

MISSED APPROACH: Climb to 2000 then climbing left turn to 2500 heading 250° and GFK VOR/DME R-097 to WIRUV/GFK 18.8 DME and hold.

AWOS-3
126.425

GRAND FORKS APP CON ★
118.1 318.1

UNICOM
122.7 (CTAF) 0



VGSI and descent angles not coincident (VGSI Angle 3.00/TCH 30).

One Minute Holding Pattern

JEGUP GFK [8.4]

WIRUV GFK [18.8]

ZOGEV GFK [23.4]

2500 ← 277° 097° → 2500

3.17° TCH 45

10.4 NM

4.6 NM

2000 2500 GFK R-097 WIRUV GFK [18.8]

hdg 250°

097°

2096 X 200

2977 X 200

4300 X 75

35

0.4% UP

REIL Rwy's 13 and 31 0

MIRL Rwy 13-31 0

CATEGORY	A	B	C	D
S-13	1400-1	504 (500-1)	1400-1 ³ / ₈ 504 (500-1 ³ / ₈)	NA
CIRCLING	1400-1	500 (500-1)	1480-1 ¹ / ₂ 580 (600-1 ¹ / ₂)	NA

GRAND FORKS INTL ALTIMETER MINIMUMS

S-13	1480-1	584 (600-1)	1480-1 ³ / ₄ 584 (600-1 ³ / ₄)	NA
CIRCLING	1480-1	580 (600-1)	1560-1 ³ / ₄ 660 (700-1 ³ / ₄)	NA