

WAAS CH 69304 W31A	APP CRS 308°	Rwy Idg 4300 TDZE 897 Apt Elev 900
--	------------------------	---

RNAV (GPS) RWY 31

CROOKSTON MUNI/KIRKWOOD FLD (CKN)

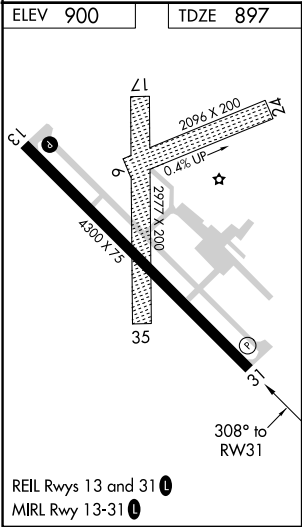
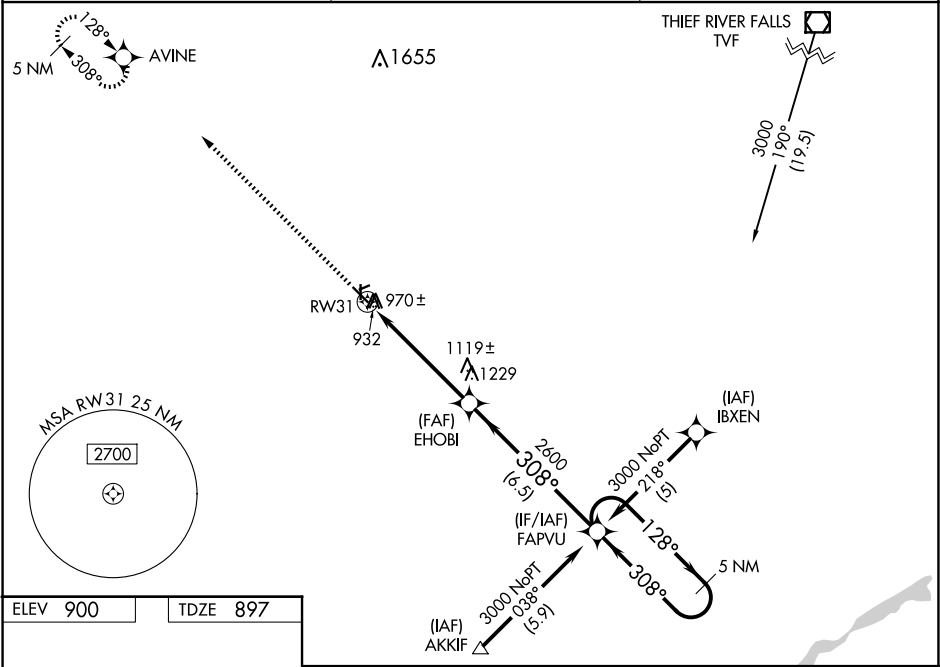
RNP APCH.

⚠

Baro-VNAV NA when using Grand Forks altimeter setting. For uncompensated Baro-VNAV systems, LNAV/VNAV NA below -16°C (4°F) or above 54°C (130°F). When local altimeter setting not received, use Grand Forks altimeter setting and increase LPV DA to 1219 feet and LNAV/VNAV DA to 1382 feet, increase all MDAs 80 feet and Circling Cat C visibility ¼ SM. Visibility reduction by helicopters NA. Circling Rwy 6, 24, 17, 35 NA at night.

MISSED APPROACH:
Climb to 3000 direct AVINE and hold.

AWOS-3 126.425	GRAND FORKS APP CON★ 118.1 318.1	UNICOM 122.7 (CTAF) 1
--------------------------	--	---------------------------------



3000	AVINE	VGSI and RNAV glidepath not coincident (VGSI Angle 3.00/TCH 40).		FAPVU	5 NM Holding Pattern
		EHOBI			
	RW31				
		5.2 NM	6.5 NM		
CATEGORY	A	B	C	D	
LPV DA	1157-1	260 (300-1)		NA	
LNAV/VNAV DA	1320-1½	423 (500-1½)		NA	
LNAV MDA	1380-1	483 (500-1)	1380-1¼ 483 (500-1¼)	NA	
CIRCLING	1380-1	480 (500-1)	1480-1½ 580 (600-1½)	NA	