

WAAS CH <b>72704</b> <b>W13A</b>	APP CRS <b>128°</b>	Rwy Idg <b>4300</b> TDZE <b>896</b> Apt Elev <b>900</b>
--	------------------------	---

# RNAV (GPS) RWY 13

## CROOKSTON MUNI/KIRKWOOD FLD (CKN)

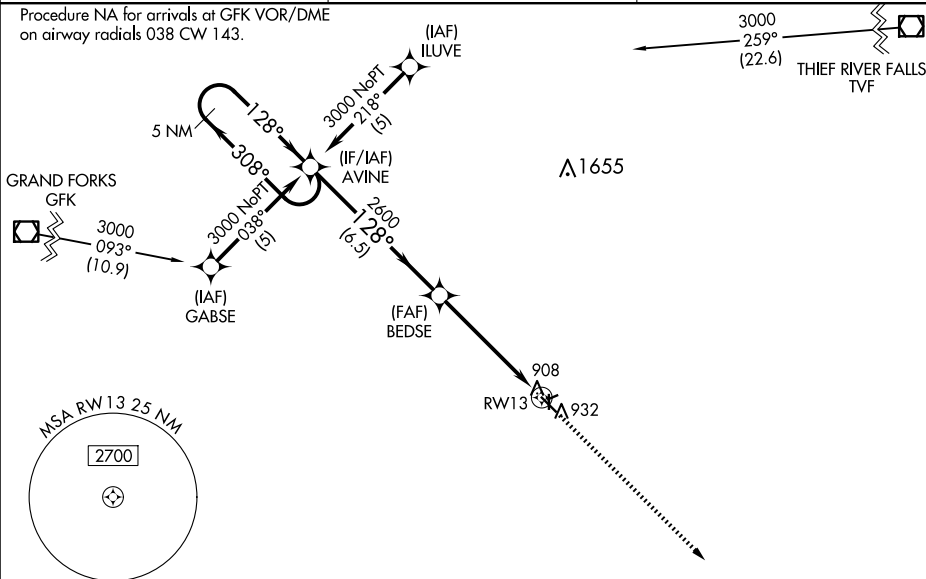
RNP APCH.

**▼** Baro-VNAV NA when using Grand Forks altimeter setting. For uncompensated Baro-VNAV systems, LNAV/VNAV NA below -16°C (4°F) or above 54°C (130°F). When local altimeter setting not received, use Grand Forks altimeter setting and increase LPV DA to 1208 feet and LNAV/VNAV DA to 1272 feet; increase all MDA's 80 feet and Circling Cat C visibility  $\frac{1}{4}$  SM. Circling Rwy's 6, 24, 17, 35 NA at night.

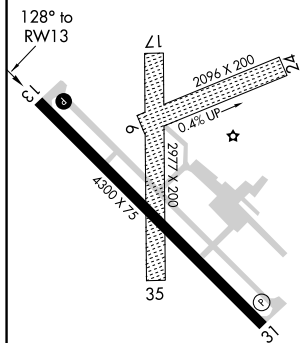

**MISSED APPROACH:** Climb to 3000 direct FAPVU and hold.

AWOS-3 <b>126.425</b>	GRAND FORKS APP CON ★ <b>118.1 318.1</b>	UNICOM <b>122.7</b> (CTAF) <b>0</b>
--------------------------	---	--

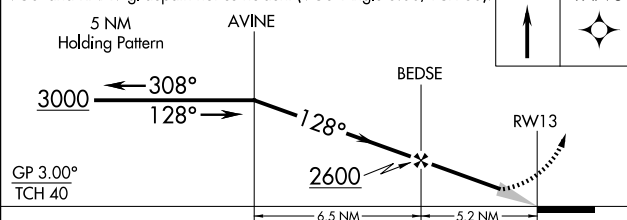
Procedure NA for arrivals at GFK VOR/DME  
on airway radials 038 CW 143.



ELEV 900		TDZE 896
----------	--	----------

RFIL Rwy 13 and 31 MIRI Rvw 13-31 

VGSI and RNAV glidepath not coincident (VGSI Angle 3.00/TCH 30).



CATEGORY		A		B		C		D	
LPV	DA	1146-1		250 (300-1)				NA	
LNNAV/ VNAV	DA	1210-1		314 (400-1)				NA	
LNNAV	MDA	1360-1	464 (500-1)			1360-1 $\frac{1}{4}$ 464 (500-1 $\frac{1}{4}$ )		NA	
CIRCLING		1360-1	460 (500-1)			1480-1 $\frac{1}{2}$ 580 (600-1 $\frac{1}{2}$ )		NA	

## RNAV (GPS) RWY 13