

VOR/DME ANW <b>112.7</b> Chan <b>74</b>	APP CRS <b>008°</b>	Rwy Idg <b>6824</b> TDZE <b>2589</b> Apt Elev <b>2589</b>
---	------------------------	---

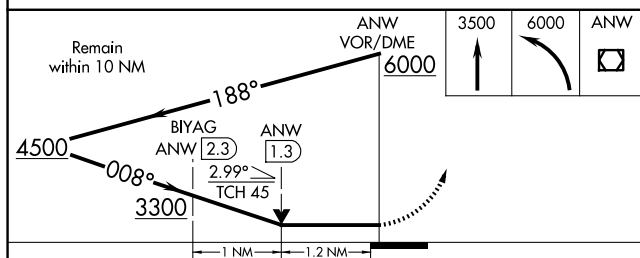
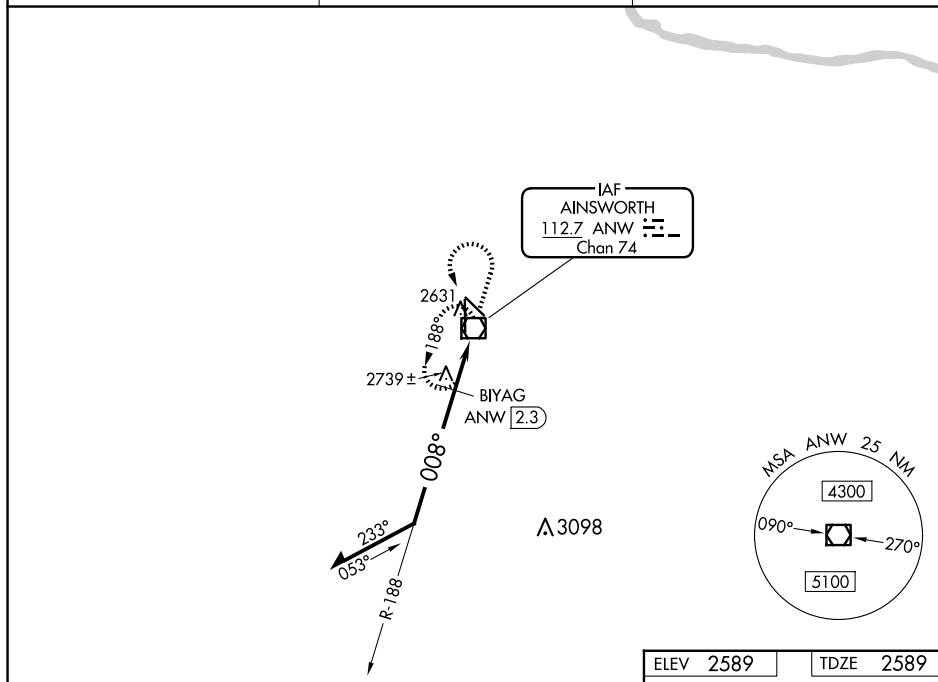
VOR RWY 35  
AINSWORTH RGNL (ANW)

**T** When local altimeter setting not received, procedure NA.  
**A** For inoperative ALS, increase BIYAG fix minimums  
 S-35 Cat D visibility to 1 1/4.



**MISSED APPROACH:** Climb to 3500 then climbing left turn to 6000 direct ANW VOR/DME and hold.

AWOS-3 <b>118.325</b>	DENVER CENTER <b>127.95 338.2</b>	UNICOM <b>122.8</b> (CTAF) <b>0</b>
--------------------------	--------------------------------------	--



CATEGORY	A	B	C	D
S-35	3300-½	711 (800-½)	3300-1½ 711 (800-1½)	3300-1¾ 711 (800-1¾)
<b>C</b> CIRCLING	3300-1	711 (800-1)	3300-2 711 (800-2)	3300-2¼ 711 (800-2¼)
BIYAG FIX MINIMUMS (DME REQUIRED)				
S-35	3000-½	411 (500-½)	3000-¾ 411 (500-¾)	3000-1 411 (500-1)
<b>C</b> CIRCLING	3000-1 411 (500-1)	3040-1 451 (500-1)	3040-1½ 451 (500-1½)	3200-2 611 (700-2)

