

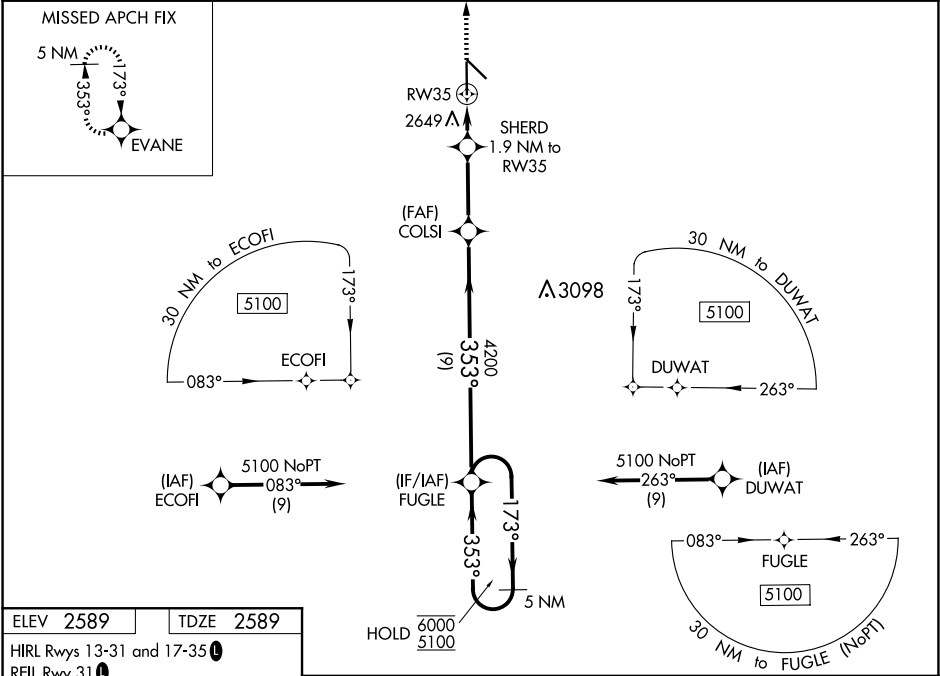
WAAS CH <b>81917</b> <b>W35A</b>	APP CRS <b>353°</b>	Rwy Idg TDZE <b>2589</b> Apt Elev <b>2589</b>
--	------------------------	---

RNAV (GPS) RWY 35

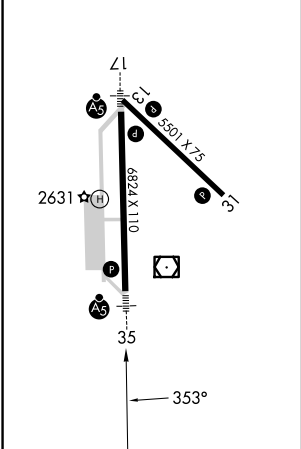
AINSWORTH RGNL (ANW)


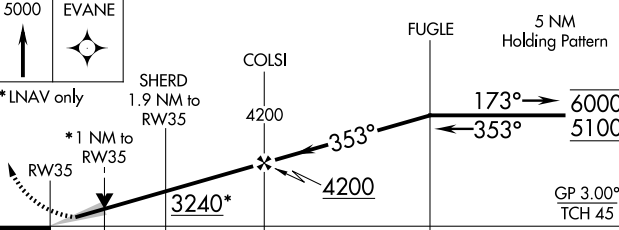

RNP APCH.	MALSR	MISSED APPROACH: Climb to 5000 direct EVANE and hold.
For uncompensated Baro-VNAV systems, LNAV/VNAV NA below -20°C or above 54°C. For inop ALS, increase LNAV/VNAV all Cats visibility to ¾ SM and LNAV Cats C and D visibility to 1 SM.		

AWOS-3 <b>118.325</b>	DENVER CENTER <b>127.95 338.2</b>	UNICOM <b>122.8 (CTAF)</b>
--------------------------	--------------------------------------	-------------------------------



ELEV <b>2589</b>	TDZE <b>2589</b>
HIRL Rwy 13-31 and 17-35	
REIL Rwy 31	



5000 ↑ EVANE					
* LNAV only					
CATEGORY	A		B	C	D
LPV DA	2789-½		200 (200-½)		
LNAV/VNAV DA	2839-½		250 (300-½)		
LNAV MDA	2960-½ 371 (400-½)		2960-⅝ 371 (400-⅝)		
 CIRCLING	3000-1 411 (500-1)	3040-1 451 (500-1)	3040-1½ 451 (500-1½)	3200-2 611 (700-2)	