

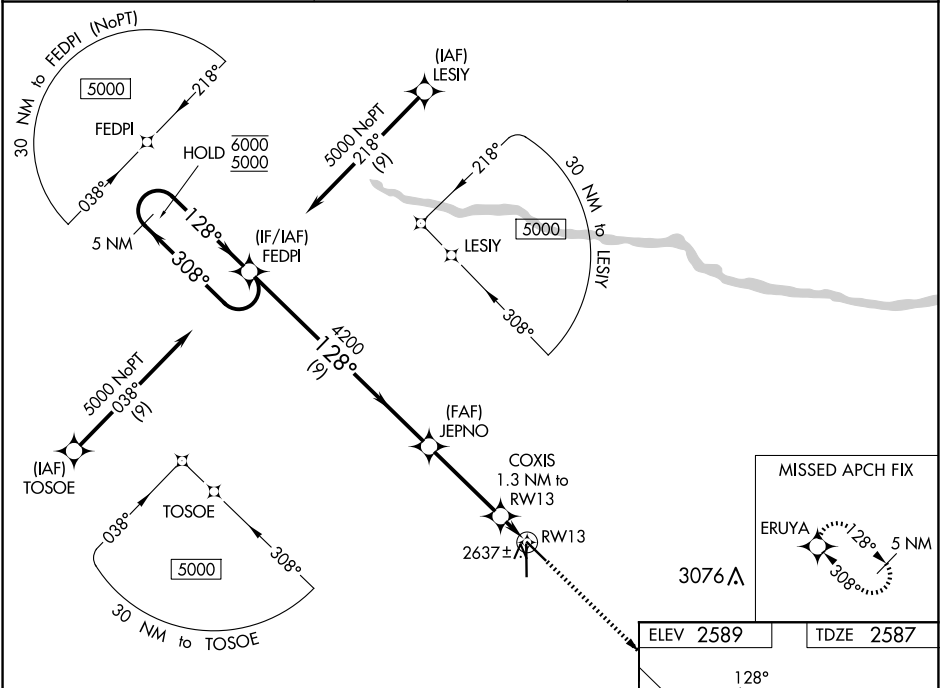
WAAS CH 99706 W13A	APP CRS 128°	Rwy Idg TDZE 2587 Apt Elev 2589
--	------------------------	---

RNAV (GPS) RWY 13

AINSWORTH RGNL (ANW)

RNP APCH.	MISSED APPROACH: Climb to 5100 direct ERUYA and hold, continue climb-in-hold to 5100.
<div><div></div><div>For uncompensated Baro-VNAV systems, LNAV/VNAV NA below -20°C or above 54°C.</div></div>	

AWOS-3 118.325	DENVER CENTER 127.95 338.2	UNICOM 122.8 (CTAF) 1
--------------------------	--------------------------------------	---------------------------------



5 NM Holding Pattern		FEDPI	JEPNO	5100 ERUYA
6000 ← 308°				
5000 → 128°				
GP 3.00°				
TCH 50				
		9 NM	3.6 NM	0.5 NM 0.8 NM
CATEGORY	A	B	C	D
LPV DA		2787-1	200 (200-1)	
LNAV/VNAV DA		2837-1	250 (300-1)	
LNAV MDA		2900-1	313 (400-1)	
CIRCLING	3000-1 411 (500-1)	3040-1 451 (500-1)	3040-1½ 451 (500-1½)	3200-2 611 (700-2)

