

DESTIN, FLORIDA

AL-5680 (FAA)

25107

WAAS CH 48923 W14A	APP CRS 143°	Rwy Idg 5001 TDZE 22 Apt Elev 22
--	------------------------	---

RNAV (GPS) RWY 14
DESTIN EXEC (DTS)

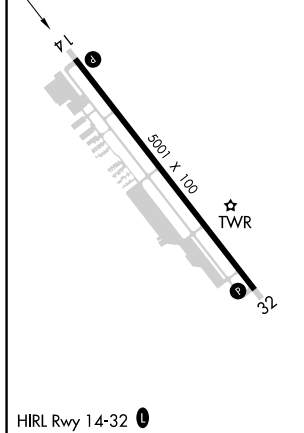
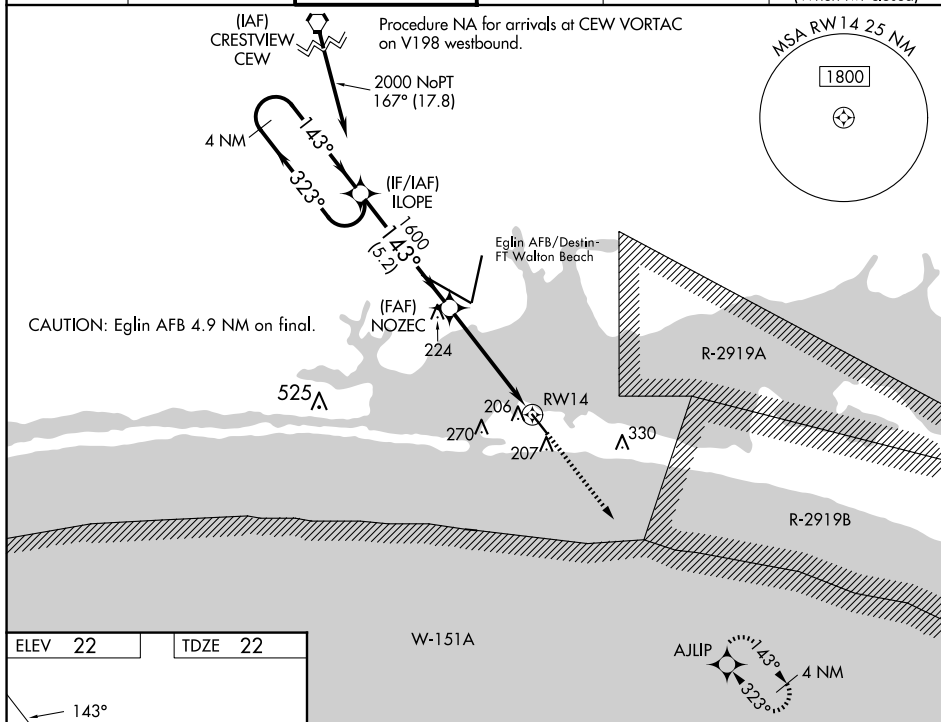
DESTIN EXEC (DTS)

T For uncompensated Baro-VNAV systems, LNAV/VNAV NA below 0°C (32°F) or above 54°C (130°F).

A Baro-VNAV and VDP NA when using Crestview altimeter setting. Rwy 14 helicopter visibility reduction below $\frac{3}{4}$ SM NA. DME/DME RNP-0.3 NA. When local altimeter setting not received, use Crestview altimeter setting and increase all DA/MDA 80 feet; increase LPV all Cats visibility $\frac{1}{8}$ SM, LNAV/VNAV all Cats visibility $\frac{3}{8}$ SM, increase LNAV Cats C and D $\frac{1}{4}$ SM, and Circling Cats C and D $\frac{1}{4}$ SM.

MISSED APPROACH:
Climb to 2000 direct
AJUP and hold.

ATIS 133.925	EGLIN APP CON 132.1 360.6	DESTIN TOWER ★ 118.45 (CTAF) 0	GND CON 121.6	CLNC DEL 121.6 377.2	CLNC DEL 127.7 (When twr closed)
------------------------	-------------------------------------	---	-------------------------	--------------------------------	---

[illegible]

DESTIN, FLORIDA
Amdt 2C 07DEC17

30°24'N-86°28'W

DESTIN EXEC (DTS)

RNAV (GPS) RWY 14

SE-3, 07 AUG 2025 to 04 SEP 2025