

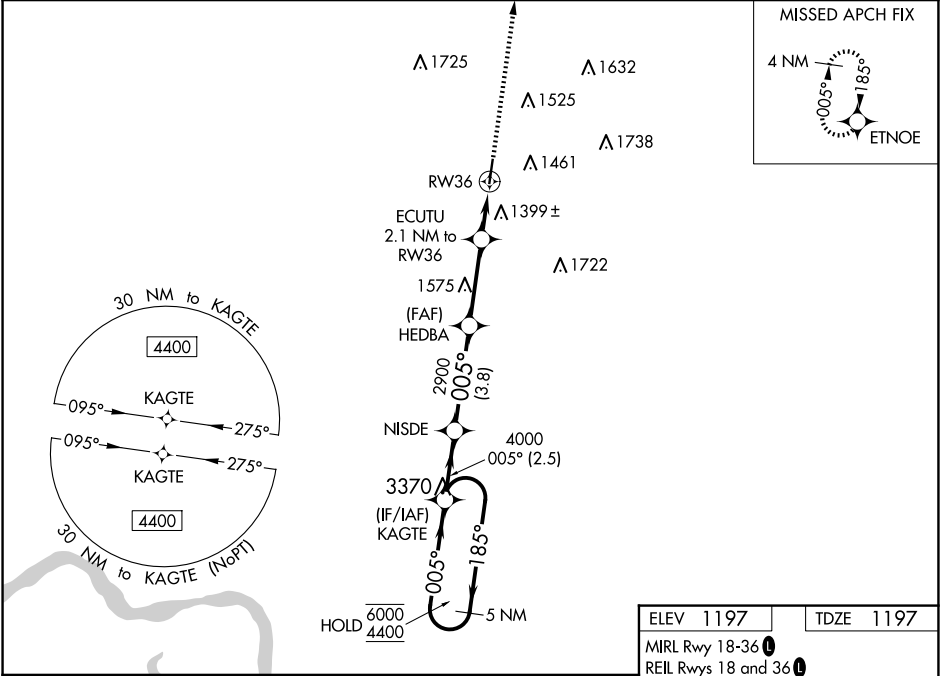
WAAS CH 42516 W36A	APP CRS 005°	Rwy Ldg TDZE 1197 Apt Elev 1197
--	------------------------	---

RNAV (GPS) RWY 36

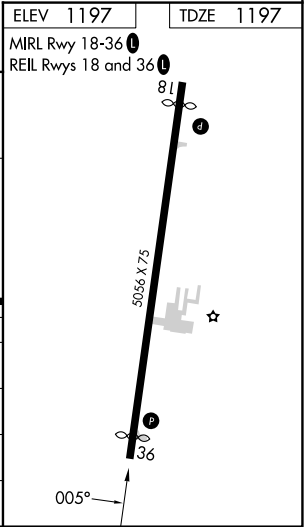
LE MARS MUNI (L.R.J)

RNP APCH - GPS.	MISSED APPROACH: Climb to 4000 direct ETNOE and hold.
<div><div><div>▼</div><div>⚠</div><div>❄</div></div><div>Rwy 36 helicopter visibility reduction below 1 SM NA. For uncompensated Baro-VNAV systems, LNAV/VNAV NA below -17°C or above 54°C.</div></div>	

AWOS-3P 120.975	SIOUX CITY APP CON * 124.6 307.0	UNICOM 122.8 (CTAF) 0
---------------------------	--	---------------------------------



5 NM Holding Pattern					4000 ETNOE	
GP 3.00° TCH 40					MIRL Rwy 18-36 0	
VGSI and RNAV glidepath not coincident (VGSI Angle 3.00/TCH 31).					REIL Rwy 18 and 36 0	
CATEGORY						
LPV DA					NA	
LNAV/VNAV DA					NA	
LNAV MDA					NA	
CIRCLING					NA	



NC-3, 07 AUG 2025 to 04 SEP 2025

NC-3, 07 AUG 2025 to 04 SEP 2025