




WAAS CH 78415 W18A	APP CRS 185°	Rwy Ldg 4756 TDZE 1197 Apt Elev 1197
--	------------------------	---

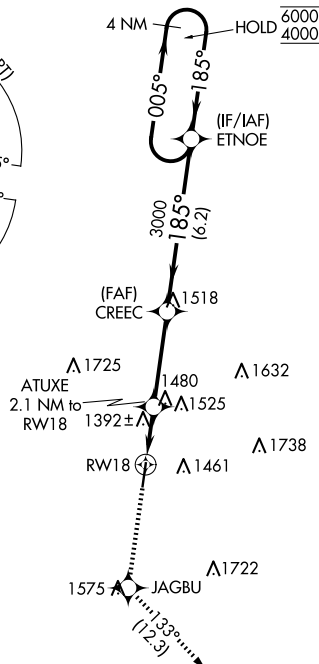
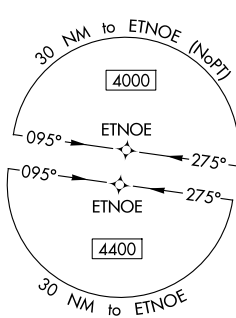
RNAV (GPS) RWY 18
LE MARS MUNI (LRJ)

RNP APCH.

 Rwy 18 helicopter visibility reduction below $\frac{3}{4}$ SM NA.
 For uncompensated Baro-VNAV systems, LNAV/VNAV NA
 below -17°C or above 54°C.

MISSED APPROACH: Climb to 4500 direct JAGBU and on track 133° to FEXAT and hold.

AWOS-3P 120.975	SIoux CITY APP CON ★ 124.6 307.0	UNICOM 122.8 (CTAF) 0
---------------------------	--	--



1976 A.

ELEV 1197

TDZE 1197

185°

81

50.56 X 7.5

36

MIRA Rwy 18-36

REIL Rwy 18 and 36

Figure 1: Example of a 4 NM Holding Pattern. The diagram illustrates a holding pattern with a 4 NM radius. Key elements include:

- Navigation Aids:** 4500, JAGBU, FEXAT, and CREC.
- Angles:** 133°, 185°, and 005°.
- Distances:** 1.3 NM, 0.8 NM, 3.5 NM, and 6.2 NM.
- Pattern Details:** The pattern is defined by a 4 NM holding pattern. The diagram also shows the holding pattern for a 4 NM holding pattern. The pattern is a series of turns: a 180° turn, followed by a 180° turn, then a 180° turn, and finally a 180° turn. The pattern is defined by a 4 NM holding pattern.

RNAV (GPS) RWY 18