

WAAS CH 97511 W33A	APP CRS 331°	Rwy Ldg 8500 TDZE 5020 Apt Elev 5020
--	------------------------	---

RNAV (GPS) RWY 33
NORTHERN COLORADO RGNL (FNL)

RNP APCH-GPS.

T Circling Rwy 24 NA at night. For uncompensated Baro-VNAV systems, LNAV/VNAV NA below -24°C or above 54°C. For inop ALS, increase LNAV/VNAV all Cats visibility to ¾ SM and LNAV visibility Cat C/D to 1 SM.

MALSFR



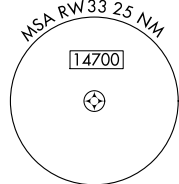
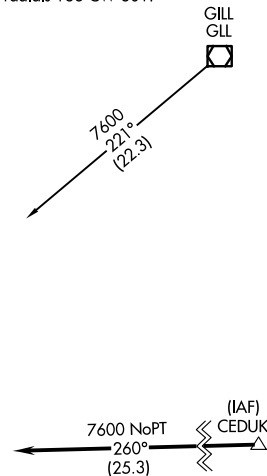
MISSED APPROACH: Climb to 5600, then climbing right turn to 7400 direct LPORT and hold.

ATIS 135.075	DENVER APP CON 134.85 251.125	NOCO TOWER★ 118.4 (CTAF) 0	GND CON 121.65	CLNC DEL 120.25 (When twr closed)
------------------------	---	--------------------------------------	--------------------------	--

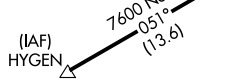
MISSED APCH FIX



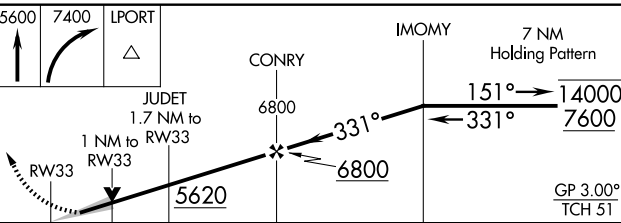
Procedure NA for arrival on GLL VOR/DME
airway radials 136 CW 301.



Procedure NA for arrivals at
HYGEN on V220 westbound
and V85 northwest bound.



Procedure NA for arrival
on DVV VORTAC airway
radials 257 CW 314



CATEGORY		A	B	C	D
LPV	DA	5220-½		200 (200-½)	
LNAV/ VNAV	DA	5329-½		309 (400-½)	
LNAV MDA		5380-½ 360 (400-½)		5380-⅝ 360 (400-⅝)	
CIRCLING		5480-1 460 (500-1)	5520-1 500 (500-1)	5520-1½ 500 (500-1½)	5700-2¼ 680 (700-2¼)

ELEV 5020	D	TDZE 5020
-----------	----------	-----------

