

APP CRS

Rwy Ldg

8500

151°

TDZE

4990

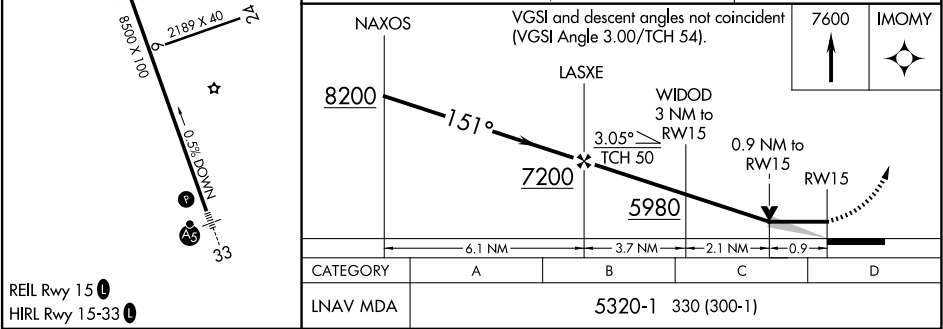
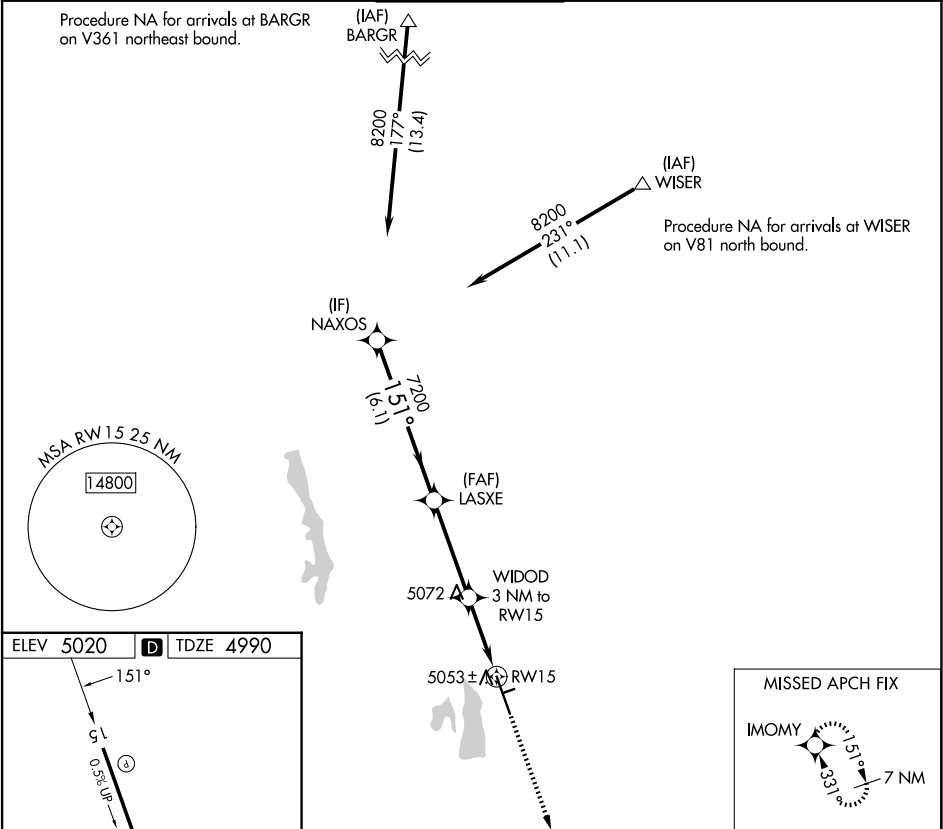
Apt Elev

5020

RNAV (GPS) RWY 15

NORTHERN COLORADO RGNL (FNL)

RNP APCH-GPS.		MISSED APPROACH: Climb to 7600 direct IMOMY and hold.		
ATIS	DENVER APP CON	NOCO TOWER*	GND CON	CLNC DEL
135.075	134.85 251.125	118.4 (CTAF) 0	121.65	120.25 (When twr closed)



SW-1, 07 AUG 2025 to 04 SEP 2025

SW-1, 07 AUG 2025 to 04 SEP 2025